

## Lamin B1 Recombinant Rabbit Monoclonal Antibody Product Datasheet

Catalog# BX50348

Clone# BP6316

**Predicted Molecular Wt:** 64kDa  
**Species Cross-reactivity:** Human  
**Applications:** IHC-P

**Purity:** ProA affinity purified IgG  
**Form:** Liquid  
**Swissprot ID:** P20700

### Background:

Lamin B1 (LMNB1) is a type B nuclear lamina protein encoded by the LMNB1 gene, essential for maintaining nuclear structure, integrity, and functional organization. As a core component of the nuclear envelope, it forms a filamentous meshwork that provides mechanical stability to the nucleus, anchors chromatin to the periphery and regulates nuclear shape.

Lamin B1 (LMNB1) is constitutively expressed across most mammalian tissues due to its fundamental role in nuclear structural integrity. It exhibits particularly high expression in epithelium-rich organs (skin, gastrointestinal tract, liver), developing and adult brain (neurons, glia), proliferative tissues (bone marrow, testis, thymus) and glandular organs (pancreas, kidney).

Lamin B1 (LMNB1) serves as a clinically relevant biomarker with dual roles in oncogenesis and neurodegeneration. Its overexpression is strongly linked to aggressive malignancies, including hepatocellular carcinoma (HCC), glioblastoma, pancreatic ductal adenocarcinoma (PDAC) and colorectal cancer.

### Subcellular location:

Nucleus inner membrane

### Recommended Method:

Heat induced epitope retrieval with Tris-EDTA buffer (pH 9.0), primary antibody incubate at RT (18°C-25°C) for 30 minutes.

### Immunogen:

Synthetic peptide. This information is proprietary to BioLynx.

### Storage Buffer:

PBS 59%, Sodium azide 0.01%, Glycerol 40%, BSA 0.05%.

### Storage Conditions:

-25°C to -18°C

### Shipment Instructions:

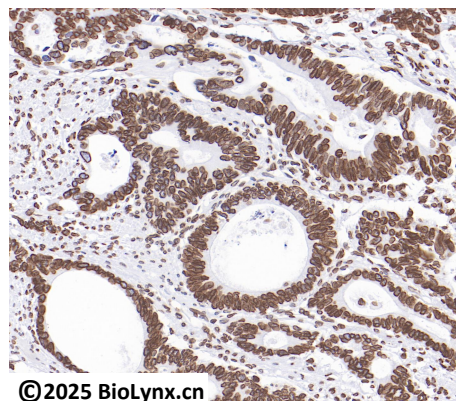
Shipped on blue ice. Upon delivery store at -25°C to -18°C. Avoid freeze / thaw cycles.

### Recommended Dilution:

IHC-P: 1:100-1:200

### Background References:

- Ma, L. et al. (2023) Bioact Mater 19:626-641.
- Huang, Z. et al. (2023) EMBO Rep 24:e56135.



©2025 BioLynx.cn

Immunohistochemistry (Formalin/PFA-fixed paraffin-embedded sections) analysis of human colon cancer labelling Lamin B1 with BP6316.

Product QC'd by:



For research use only. Not for use in diagnostic or therapeutic applications.