

LRP Recombinant Rabbit Monoclonal Antibody Product Datasheet

Catalog# BX50330

Clone# BP6306

Predicted Molecular Wt: 99kDa
Species Cross-reactivity: Human
Applications: IHC-P

Purity: ProA affinity purified IgG
Form: Liquid
Swissprot ID: Q14764

Background:

Lung resistance protein (LRP) is a protein with a molecular weight of 104-110 kDa, and also belongs to one of the phenotypes of multidrug resistance (MDR), which mainly generates resistance by participating in the obstruction of intercellular drug transport or by decreasing the effective concentration of the target drug by the entry of the drug into the cytoplasmic vesicles into an atrial segregation.

LRP mediates resistance to alkylating agents and platinum, which are not mediated by the P-glycoproteins and MRP and which are all DNA-targeted. It can be expressed in many tumour tissues and positivity predicts insensitivity to chemotherapy and is mainly used in the study of chemotherapeutic agents for various malignancies.

Subcellular location:

Cytoplasm

Recommended Method:

Heat induced epitope retrieval with Tris-EDTA buffer (pH 9.0), primary antibody incubate at RT (18°C-25°C) for 30 minutes.

Immunogen:

Synthetic peptide. This information is proprietary to BioLynx.

Storage Buffer:

PBS 59%, Sodium azide 0.01%, Glycerol 40%, BSA 0.05%.

Storage Conditions:

-25°C to -18°C

Shipment Instructions:

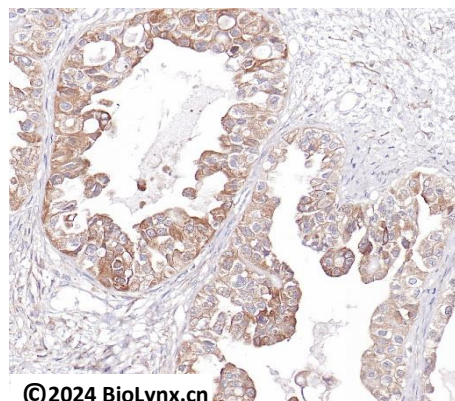
Shipped on blue ice. Upon delivery store at -25°C to -18°C. Avoid freeze / thaw cycles.

Recommended Dilution:

IHC-P: 1:100-1:200

Background References:

- Shi L et al. (2017) BMC Cancer 17:138.
- O'Dwyer D et al. (2011) PLoS One 6:e27718.



© 2024 BioLynx.cn

Immunohistochemistry (Formalin/PFA-fixed paraffin-embedded sections) analysis of Endometrial cancer labelling LRP with BP6306.

Product QC'd by:



For research use only. Not for use in diagnostic or therapeutic applications.