

## GS Recombinant Rabbit Monoclonal Antibody Product Datasheet

Catalog# BX50327

Clone# BP6304

**Predicted Molecular Wt:** 42kDa  
**Species Cross-reactivity:** Human  
**Applications:** IHC-P

**Purity:** ProA affinity purified IgG  
**Form:** Liquid  
**Swissprot ID:** P15104

### Background:

Glutamine synthetase (GS), also known as glutamate-ammonia ligase (GLUL), catalyzes the de novo synthesis of glutamine from glutamate and ammonia.

GS is ubiquitously expressed in normal tissue, particularly high expression in the liver and brain. GS expression is elevated in various cancers.

High expression of GS in breast cancer patients is associated with larger tumor size and high level of HER2 expression. It is a predictor of poor survival in patients with glioma and liver cancers.

### Subcellular location:

Cytoplasm

### Recommended Method:

Heat induced epitope retrieval with Tris-EDTA buffer (pH 9.0), primary antibody incubate at RT (18°C-25°C) for 30 minutes.

### Immunogen:

Synthetic peptide. This information is proprietary to Biolynx.

### Storage Buffer:

PBS 59%, Sodium azide 0.01%, Glycerol 40%, BSA 0.05%.

### Storage Conditions:

-25°C to -18°C

### Shipment Instructions:

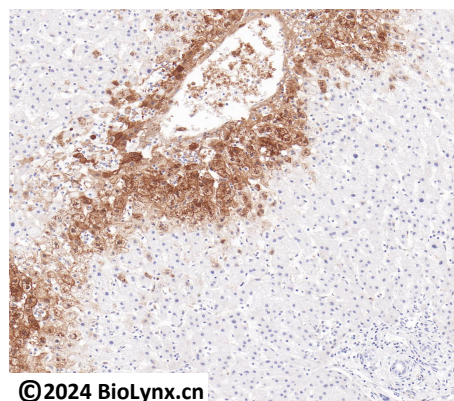
Shipped on blue ice. Upon delivery store at -25°C to -18°C. Avoid freeze / thaw cycles.

### Recommended Dilution:


IHC-P: 1:100-1:200

### Background References:

1. Zhang, J. et al. (2017) EMBO J 36, 1302-1315.
2. Wang, Y. et al. (2017) J Cell Biochem 118, 2018-2025.



Immunohistochemistry (Formalin/PFA-fixed paraffin-embedded sections) analysis of liver labelling GS with BP6304.

Product QC'd by: 

For research use only. Not for use in diagnostic or therapeutic applications.