

Mesothelin

Recombinant Rabbit Monoclonal Antibody

Product Datasheet

Catalog# BX50325

Clone# BP6302

Predicted Molecular Wt: 69kDa
Species Cross-reactivity: Human
Applications: IHC-P

Purity: ProA affinity purified IgG
Form: Liquid
Swissprot ID: Q13421

Background:

The MSLN gene encodes a 69 kDa precursor protein that is proteolytically cleaved to yield megakaryocyte potentiating factor (MPF) and a GPI-anchored membrane protein termed mesothelin.

Expression of mesothelin is largely confined to mesothelial cells of normal pleura, pericardium and peritoneum, but has been reported to be overexpressed in some cancers, including mesothelioma, pancreatic and ovarian adenocarcinomas.

There are many clinical applications of mesothelin, such as vaccines for tumor treatment and targets for tumor specific immunotherapy.

Subcellular location:

Membrane/Cytoplasm

Recommended Method:

Heat induced epitope retrieval with Tris-EDTA buffer (pH 9.0), primary antibody incubate at RT (18°C-25°C) for 30 minutes.

Immunogen:

Synthetic peptide. This information is proprietary to BioLynx.

Storage Buffer:

PBS 59%, Sodium azide 0.01%, Glycerol 40%, BSA 0.05%.

Storage Conditions:

-25°C to -18°C

Shipment Instructions:

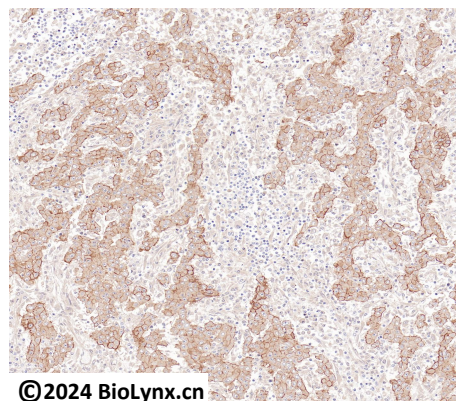
Shipped on blue ice. Upon delivery store at -25°C to -18°C. Avoid freeze / thaw cycles.

Recommended Dilution:

IHC-P: 1:100-1:200

Background References:

1. Paolo, B. (2017) OncoTargets and Therapy, 10: 5337-5353.
2. Pastan, I. (2014) Cancer Res 74, 2907-12.



©2024 BioLynx.cn

Immunohistochemistry (Formalin/PFA-fixed paraffin-embedded sections) analysis of mesothelioma labelling Mesothelin with BP6302.

Product QC'd by:



For research use only. Not for use in diagnostic or therapeutic applications.