

Cadherin 16 Recombinant Rabbit Monoclonal Antibody Product Datasheet

Catalog# BX50324

Clone# BP6301

Predicted Molecular Wt: 90kDa
Species Cross-reactivity: Human
Applications: IHC-P

Purity: ProA affinity purified IgG
Form: Liquid
Swissprot ID: O75309

Background:

Cadherins are calcium-dependent cell adhesion proteins. They preferentially interact with themselves in a homophilic manner in connecting cells.

Cadherin 16 is a member of the cadherin family of cell adhesion molecules that is found in the basolateral membrane of renal tubular epithelial cells of the distal tubules and collecting duct.

Studies have shown high sensitivity and specificity of Cadherin 16 to chromophobe renal cell carcinoma (RCC) and oncocytoma. Conversely, low reactivity was observed with clear cell RCC and papillary RCC.

Subcellular location:

Membrane/Cytoplasm

Recommended Method:

Heat induced epitope retrieval with Tris-EDTA buffer (pH 9.0), primary antibody incubate at RT (18°C-25°C) for 30 minutes.

Immunogen:

Synthetic peptide. This information is proprietary to BioLynx.

Storage Buffer:

PBS 59%, Sodium azide 0.01%, Glycerol 40%, BSA 0.05%.

Storage Conditions:

-25°C to -18°C

Shipment Instructions:

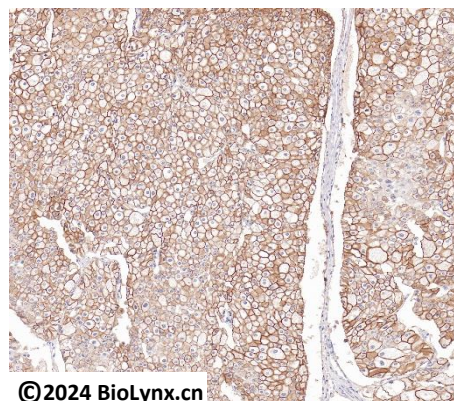
Shipped on blue ice. Upon delivery store at -25°C to -18°C. Avoid freeze / thaw cycles.

Recommended Dilution:

IHC-P: 1:100-1:200


Background References:

- Li Q, et al. (2021) Theranostics 11:10064-10073.
- Lu X, et al. (2019) Kidney Int 96:1308-1319.



©2024 BioLynx.cn

Immunohistochemistry (Formalin/PFA-fixed paraffin-embedded sections) analysis of chromophobe renal cell carcinoma labelling Cadherin 16 with BP6301.

Product QC'd by: 

For research use only. Not for use in diagnostic or therapeutic applications.