

## SATB2 Recombinant Rabbit Monoclonal Antibody Product Datasheet

Catalog# BX50321

Clone# BP6298

**Predicted Molecular Wt:** 83kDa  
**Species Cross-reactivity:** Human  
**Applications:** IHC-P

**Purity:** ProA affinity purified IgG  
**Form:** Liquid  
**Swissprot ID:** Q9UPW6

### Background:

SATB2 is a nuclear matrix attachment region-binding transcription factor with developmental role in craniofacial, neural and osteoblastic differentiation.

SATB2 is expressed in the epithelium of the lower gastrointestinal tract (appendix, colon and rectum). SATB2 expression is also seen in developing cortical, spinal cord neurons, osteoblasts, lymphocytes, epithelial cells of renal convoluted tubules and neurons in brain.

SATB2 is not only a marker for osteoblast differentiation, but also a special marker for colorectal cancer. SATB2 plays a significant role in the development of the nervous system, skeletal development and tumor cell invasion.

### Subcellular location:

Nucleus

### Recommended Method:

Heat induced epitope retrieval with Tris-EDTA buffer (pH 9.0), primary antibody incubate at RT (18°C-25°C) for 30 minutes.

### Immunogen:

Synthetic peptide. This information is proprietary to BioLynx.

### Storage Buffer:

PBS 59%, Sodium azide 0.01%, Glycerol 40%, BSA 0.05%.

### Storage Conditions:

-25°C to -18°C

### Shipment Instructions:

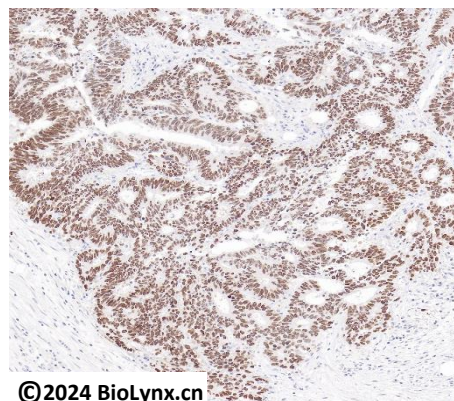
Shipped on blue ice. Upon delivery store at -25°C to -18°C. Avoid freeze / thaw cycles.

### Recommended Dilution:

IHC-P: 1:100-1:200

### Background References:

- Zhou, L.Q. (2012) J Biol Chem 287, 30641-52.
- Wang, S. et al. (2009) J Pathol 219, 114-22.



©2024 BioLynx.cn

Immunohistochemistry (Formalin/PFA-fixed paraffin-embedded sections) analysis of colon cancer labelling SATB2 with BP6298.

Product QC'd by: 

For research use only. Not for use in diagnostic or therapeutic applications.