

## FR $\alpha$ Recombinant Rabbit Monoclonal Antibody Product Datasheet

Catalog# BX50309

Clone# BP6286

**Predicted Molecular Wt:** 30kDa  
**Species Cross-reactivity:** Human  
**Applications:** IHC-P

**Purity:** ProA affinity purified IgG  
**Form:** Liquid  
**Swissprot ID:** P15328

### Background:

The folate receptor alpha (FR $\alpha$ ) is a glycosylphosphatidylinositol-linked cell surface glycoprotein that has high affinity for folate and folic acid analogs at neutral pH. It is a member of the folate receptor family, which includes the isoforms FR $\alpha$ , FR $\beta$  (72% identity), FR $\gamma$  (68% identity). FR $\alpha$  binds to folate and reduced folic acid derivatives and mediates delivery of 5-methyltetrahydrofolate and folate analogs into the interior of cells. Also, it has been required for normal embryonic development and normal cell proliferation.

Most normal tissues do not express FR $\alpha$ , it is exclusively expressed in tissues of epithelial origin, such as kidney, lung and cerebellum. FR $\alpha$  has high levels in serous and endometrioid epithelial ovarian cancer (OC), endometrial adenocarcinoma, and non-small cell lung cancer (NSCLC) of the adenocarcinoma subtype.

Several features of FR $\alpha$  make it an attractive target for cancer immunotherapy and marker for the diagnosis of cancer: (i) it is largely shielded from the immune system in normal tissues; (ii) it becomes exposed when overexpressed on a variety of malignancies; and (iii) it is functionally active in cancer pathogenesis and is immunogenic.

### Subcellular location:

Cell membrane, cytoplasm.

### Recommended Method:

Heat induced epitope retrieval with Tris-EDTA buffer (pH 9.0), primary antibody incubate at RT (18°C-25°C) for 30 minutes.

### Immunogen:

Recombinant protein. This information is proprietary to Biolynx.

### Storage Buffer:

PBS 59%, Sodium azide 0.01%, Glycerol 40%, BSA 0.05%.

### Storage Conditions:

-25°C to -18°C

### Shipment Instructions:

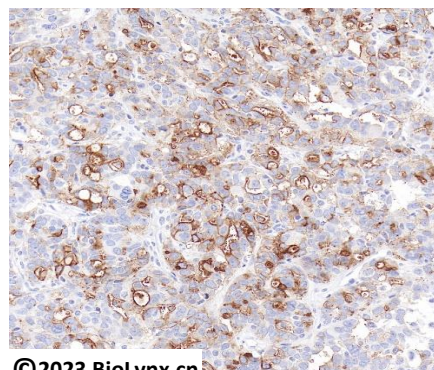
Shipped on blue ice. Upon delivery store at -25°C to -18°C. Avoid freeze / thaw cycles.

### Recommended Dilution:

IHC-P: 1:100-1:200


### Background References:

1. Ab O, Whiteman KR, et al. Mol Cancer Ther.14(7):1605-13, 2015 Jul.
2. Della-Longa S, Arcovito A. J Mol Graph Model. 44:197-207, 2013 Jul.



©2023 Biolynx.cn

Immunohistochemistry (Formalin/PFA-fixed paraffin-embedded sections) analysis of human serous ovarian cancer tissue sections labeling FR $\alpha$  with BP6286.

Product QC'd by: 

**For research use only. Not for use in diagnostic or therapeutic applications.**