

NKX2.2 Recombinant Rabbit Monoclonal Antibody Product Datasheet

Catalog# BX50315

Clone# BP6292

Predicted Molecular Wt: 30kDa
Species Cross-reactivity: Human
Applications: IHC-P

Purity: ProA affinity purified IgG
Form: Liquid
Swissprot ID: O95096

Background:

NKX2.2 is a homeodomain transcription factor that plays a role in neuroendocrine and glial differentiation.

NKX2.2 is expressed in normal tissues, including the cerebral cortex, pancreas and stomach. Highly expressed in Ewing's sarcoma.

As one of many small round blue cell tumors, Ewing's sarcoma can be difficult to diagnose due to the characteristic undifferentiated morphology. NKX2.2 has proven its utility as a sensitive marker for distinguishing Ewing's sarcoma from other round blue cell tumors when used in a panel.

Subcellular location:

Nucleus

Recommended Method:

Heat induced epitope retrieval with Tris-EDTA buffer (pH 9.0), primary antibody incubate at RT (18°C-25°C) for 30 minutes.

Immunogen:

This information is proprietary to BioLynx.

Storage Buffer:

PBS 59%, Sodium azide 0.01%, Glycerol 40%, BSA 0.05%.

Storage Conditions:

-25°C to -18°C

Shipment Instructions:

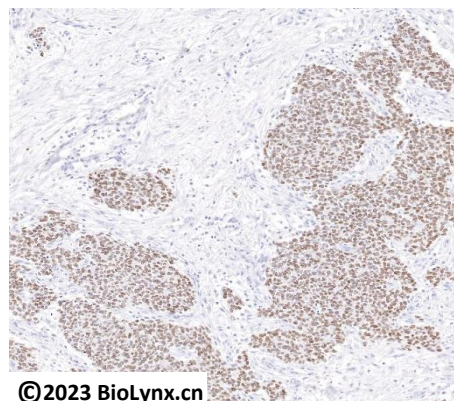
Shipped on blue ice. Upon delivery store at -25°C to -18°C. Avoid freeze / thaw cycles.

Recommended Dilution:

IHC-P: 1:100-1:200


Background References:

- Yin P Hung.(2016) Modern pathology : 29(4), 370-380
- Yoshinari Yamamoto.(2015) Journal of cytology, 32(1), 30-32



©2023 BioLynx.cn

Immunohistochemistry (Formalin/PFA-fixed paraffin-embedded sections) analysis of Ewing's sarcoma labelling NKX2.2 with BP6292.

Product QC'd by: 

For research use only. Not for use in diagnostic or therapeutic applications.