

EpCAM Recombinant Rabbit Monoclonal Antibody Product Datasheet

Catalog# BX00090

Clone# RR694

Predicted Molecular Wt: 35kDa

Species Cross-reactivity: Human

Species cross-reactivity determined by WB

Applications: WB IHC-P FC IP

Purity: ProA affinity purified IgG

Form: Liquid

Swissprot ID: P16422

Background:

May act as a physical homophilic interaction molecule between intestinal epithelial cells (IECs) and intraepithelial lymphocytes (IELs) at the mucosal epithelium for providing immunological barrier as a first line of defense against mucosal infection. Plays a role in embryonic stem cells proliferation and differentiation. Up-regulates the expression of FABP5, MYC and cyclins A and E.

Immunogen:

A synthetic peptide corresponding to residues aa1-100 of human EPCAM was used as an immunogen.

Storage Buffer:

PBS 59%, Sodium azide 0.01%, Glycerol 40%, BSA 0.05%.

Storage conditions:

-20°C.

Storage instructions:

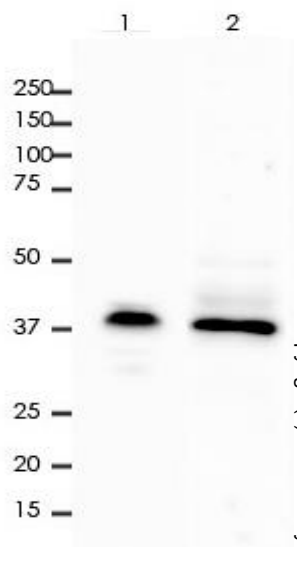
Shipped on blue ice. Upon delivery, aliquot, and store at -20°C. Avoid freeze / thaw cycles.

Recommended Dilutions:

WB: 1:2,000 - 1:5,000
IHC-P: 1:1,600 - 1:3,200
FC: 1:800 - 1:2,000
IP: 1:50

Background References:

- Salomon J et al. Nat Commun 8:13998 (2017).
- Shin S et al. Hepatology 64:1163-77 (2016).



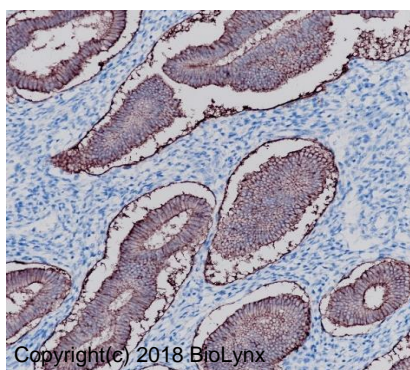
All lanes: Anti-EpCAM antibody at 1:2,000 dilution

Predicted MW: 35 kDa
Observed MW: 40 kDa

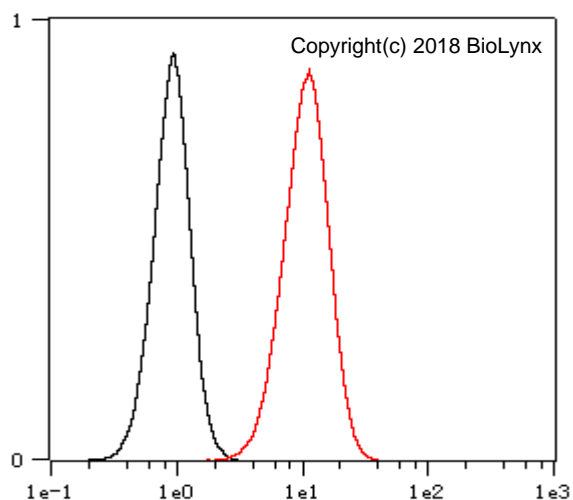
Lane 1: HT-29
Lane 2: T47D

Lysate at 10 µg per lane
2nd Ab:
GAR HRP(H+L) 1:5,000

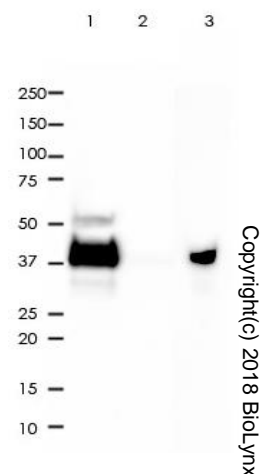
Exposure: 50s



Immunohistochemistry (Formalin/PFA-fixed paraffin-embedded sections) analysis of human uterus tissue labelling EpCAM with RR694 at 1:3,200. Heat mediated antigen retrieval was performed using Tris/EDTA buffer pH 9.0.



Overlay histogram showing HCT-116 cells stained with RR694 (Red). The cells were fixed with 4% paraformaldehyde (10 min) and then permeabilized with 0.1% TritonX-100 for 15 min. The cells were then incubated in the antibody (RR694, 1:800 dilution) in 1x PBS/1% BSA for 30 min at room temperature. The secondary antibody used was a Goat Anti-Rabbit Alexa Fluor® 488 (IgG H+L) at 1:2,000 dilution for 20 min at room temperature. Unlabelled sample (Black) was used as a control.



EpCAM was immunoprecipitated from 0.4mg of HT-29 whole cell lysate with RR694 at 1:50 dilution.

2nd Ab:

GAR HRP for IP 1:500

Lane 1: RR694 IP in HT-29 whole cell lysate

Lane 2: PBS instead of RR694 in HT-29 whole cell lysate

Lane 3: HT-29 whole cell lysate, 10 µg (input)

Exposure: 120s

Product QC'd by:



For research use only. Not for use in diagnostic or therapeutic applications.