

Glucagon Recombinant Rabbit Monoclonal Antibody Product Datasheet

Catalog# BX50288

Clone# BP6265

Predicted Molecular Wt: 21kDa
Species Cross-reactivity: Human
Applications: IHC-P

Purity: ProA affinity purified IgG
Form: Liquid
Swissprot ID: P01275

Background:

Glucagon plays a key role in glucose metabolism and homeostasis. Glucagon regulates blood glucose by increasing gluconeogenesis and decreasing glycolysis. Glucagon is a counterregulatory hormone of insulin, raises plasma glucose levels in response to insulin-induced hypoglycemia. It plays an important role in initiating and maintaining hyperglycemic conditions in diabetes.

Glucagon secreted in the A cells of the islets of Langerhans and L cells throughout the gastrointestinal tract.

Glucagon detect glucagon-secreting cells and tumors, such as glucagon tumors.

Subcellular location:

Cytoplasm

Recommended Method:

Heat induced epitope retrieval with Tris-EDTA buffer (pH 9.0), primary antibody incubate at RT (18°C-25°C) for 30 minutes.

Immunogen:

Recombinant protein fragment of Glucagon was used as an immunogen. This information is proprietary to Biolynx.

Storage Buffer:

PBS 59%, Sodium azide 0.01%, Glycerol 40%, BSA 0.05%.

Storage Conditions:

-25°C to -18°C

Shipment Instructions:

Shipped on blue ice. Upon delivery store at -25°C to -18°C. Avoid freeze / thaw cycles.

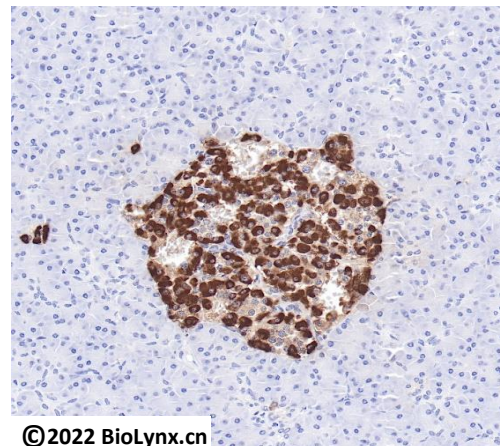
Recommended Dilution:

IHC-P: 1:100-1:200

Background References:

1. PMID: 10605628

2. PMID: 12626323



Immunohistochemistry (Formalin/PFA-fixed paraffin-embedded sections) analysis of human pancreas labelling Glucagon with BP6265.

Product QC'd by:



For research use only. Not for use in diagnostic or therapeutic applications.