

## Claudin18.2 Recombinant Rabbit Monoclonal Antibody Product Datasheet

Catalog# BX50272

Clone# BP6249

**Predicted Molecular Wt:** 28kDa  
**Species Cross-reactivity:** Human  
**Applications:** IHC-P

**Purity:** ProA affinity purified IgG  
**Form:** Liquid  
**Swissprot ID:** P56856-2

### Background:

Claudin18.2 (CLDN18.2) is a splice variant of the membrane epithelial tight junctions protein Claudin18 (CLDN18) and has been identified as a promising biomarker for targeted therapy. While upon malignant transformation, the changes in cell polarity lead to the exposure of CLDN18.2 epitopes, which are suitable for targeted therapy. Prior evidence demonstrates that except for GC, CLDN18.2 is aberrantly expressed in various primary tumors and metastases, including pancreatic, biliary, ovarian, and lung adenocarcinomas, which makes CLDN18.2 a pan-cancer target.

CLDN18.2 has a restricted expression profile in normal tissues, it physiologically expresses only in the tight junction supramolecular complex of gastric mucosa.

### Subcellular location:

Membrane

### Recommended Method:

Heat induced epitope retrieval with Tris-EDTA buffer (pH 9.0), primary antibody incubate at RT (18°C-25°C) for 30 minutes.

### Immunogen:

Recombinant protein fragment of human Claudin18.2 was used as an immunogen.

### Storage Buffer:

PBS 59%, Sodium azide 0.01%, Glycerol 40%, BSA 0.05%.

### Storage Conditions:

-25°C to -18°C

### Shipment Instructions:

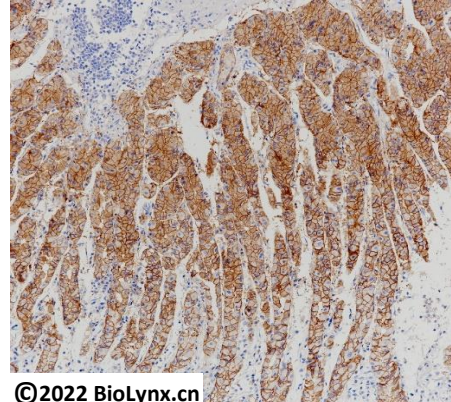
Shipped on blue ice. Upon delivery store at -25°C to -18°C. Avoid freeze / thaw cycles.

### Recommended Dilution:

IHC-P: 1:100-1:200

### Background References:

- Xu B et al. J Gastrointest Oncol 11:1431-1439 (2020).
- Moentenich V et al. Oncol Lett 19:3665-3670 (2020).



©2022 BioLynx.cn

Immunohistochemistry (Formalin/PFA-fixed paraffin-embedded sections) analysis of human stomach labelling Claudin18.2 with BP6249.

Product QC'd by:



For research use only. Not for use in diagnostic or therapeutic applications.