

Clusterin Recombinant Rabbit Monoclonal Antibody Product Datasheet

Catalog# BX50291

Clone# BP6268

Predicted Molecular Wt: 52kDa
Species Cross-reactivity: Human
Applications: IHC-P

Purity: ProA affinity purified IgG
Form: Liquid
Swissprot ID: P10909

Background:

Clusterin functions as extracellular chaperone that prevents aggregation of nonnative proteins. It also functions as intracellular chaperone that prevents aggregation of nonnative proteins. Its intracellular form suppresses stress-induced apoptosis by stabilizing mitochondrial membrane integrity through interaction with HSPA5.

Clusterin is detected in blood plasma, cerebrospinal fluid, milk, seminal plasma and colon mucosa. It's also detected in brain, testis, ovary, liver and pancreas, and at lower levels in kidney, heart, spleen and lung.

Clusterin has been shown to stain 95% of systemic ALCL, including 100% of ALK-1(+) and 91% of ALK-1(-) ALCL. Studies have shown that clusterin may be a useful diagnostic marker for ALCL, especially in ALK-1(-) cases. Overexpression of clusterin appears to be a useful prognostic factor for patients with ovarian carcinomas.

Subcellular location:

Secreted

Recommended Method:

Heat induced epitope retrieval with Tris-EDTA buffer (pH 9.0), primary antibody incubate at RT (18°C-25°C) for 30 minutes.

Immunogen:

Recombinant protein fragment of Clusterin was used as an immunogen. This information is proprietary to BioLynx.

Storage Buffer:

PBS 59%, Sodium azide 0.01%, Glycerol 40%, BSA 0.05%.

Storage Conditions:

-25°C to -18°C

Shipment Instructions:

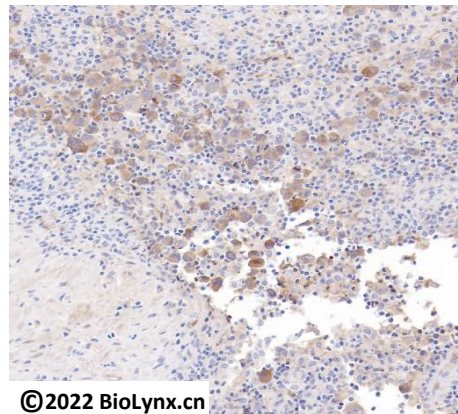
Shipped on blue ice. Upon delivery store at -25°C to -18°C. Avoid freeze / thaw cycles.

Recommended Dilution:

IHC-P: 1:100-1:200

Background References:

1. PMID:11123922
2. PMID:17322305



©2022 BioLynx.cn

Immunohistochemistry (Formalin/PFA-fixed paraffin-embedded sections) analysis of human ALCL labelling Clusterin with BP6268.

Product QC'd by:



For research use only. Not for use in diagnostic or therapeutic applications.