

Parvalbumin alpha Recombinant Rabbit Monoclonal Antibody Product Datasheet

Catalog# BX50301

Clone# BP6278

Predicted Molecular Wt: 12kDa
Species Cross-reactivity: Human
Applications: IHC-P

Purity: ProA affinity purified IgG
Form: Liquid
Swissprot ID: P20472

Background:

Parvalbumin alpha is a low molecular weight calcium-bound albumin (usually 9-11 kDa), structurally related to calmodulin and troponin C, and is a stable protein involved in calcium signaling. Parvalbumin is involved in physiological processes such as cell cycle regulation, second messenger production, muscle contraction, microtubule organization and light conduction.

Parvalbumin alpha is found in rapidly contracting muscles, where its levels are highest, as well as in the brain and some endocrine tissues. In normal kidneys, parvoprotein has been shown to be confined to distal tubule cells and collecting tubule cells (intercellular cells).

Subcellular location:

Nucleus & Cytoplasm

Recommended Method:

Heat induced epitope retrieval with Tris-EDTA buffer (pH 9.0), primary antibody incubate at RT (18°C-25°C) for 30 minutes.

Immunogen:

Full length recombinant protein of human Parvalbumin alpha was used as an immunogen.

Storage Buffer:

PBS 59%, Sodium azide 0.01%, Glycerol 40%, BSA 0.05%.

Storage Conditions:

-25°C to -18°C

Shipment Instructions:

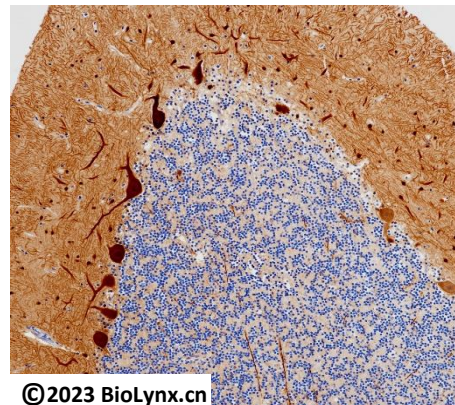
Shipped on blue ice. Upon delivery store at -25°C to -18°C. Avoid freeze / thaw cycles.

Recommended Dilution:

IHC-P: 1:100-1:200

Background References:

1. Bastianelli, E. (2003) Cerebellum 2, 242-62.
2. Ruden, J.B. et al. (2020) Neuropsychopharmacology, doi: 10.1038/s41386-020-0778-9.



©2023 BioLynx.cn

Immunohistochemistry (Formalin/PFA-fixed paraffin-embedded sections) analysis of human cerebellum labelling Parvalbumin alpha with BP6278.

Product QC'd by:



For research use only. Not for use in diagnostic or therapeutic applications.