

INSM-1 Recombinant Rabbit Monoclonal Antibody Product Datasheet

Catalog# BX50263

Clone# BP6240

Predicted Molecular Wt: 53kDa
Species Cross-reactivity: Human
Applications: IHC-P

Purity: ProA affinity purified IgG
Form: Liquid
Swissprot ID: Q01101

Background:

INSM-1 (insulinoma-associated protein 1), also known as zinc-finger protein IA-1, is a developmentally regulated zinc-finger transcription factor. It localizes to the nucleus and is expressed in embryonic tissues undergoing neuroendocrine differentiation. It plays an important role in neuroendocrine development and is required for normal differentiation of pancreatic endocrine cells. Inhibition of INSM-1 results in decreased formation of glucagon and Insulin positive cells.

INSM-1 is not expressed in normal adult tissues but it can be found highly expressed in neuroendocrine tumors.

INSM-1 is mainly used in clinical diagnosis of neuroendocrine tumors.

Subcellular location:

Nucleus

Recommended Method:

Heat induced epitope retrieval with Tris-EDTA buffer (pH 9.0), primary antibody incubate at RT (18°C-25°C) for 30 minutes.

Immunogen:

Synthetic peptide. This information is proprietary to Biolynx.

Storage Buffer:

PBS 59%, Sodium azide 0.01%, Glycerol 40%, BSA 0.05%.

Storage Conditions:

-25°C to -18°C

Shipment Instructions:

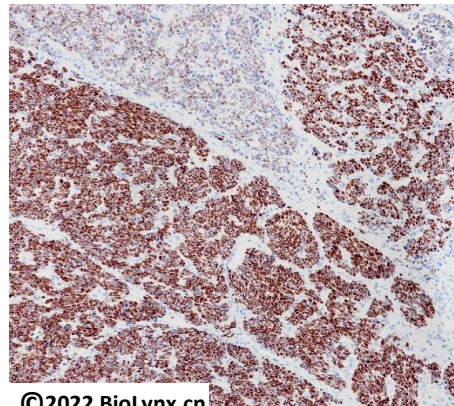
Shipped on blue ice. Upon delivery store at -25°C to -18°C. Avoid freeze / thaw cycles.

Recommended Dilution:

IHC-P: 1:100-1:200

Background References:

1. Chen, C., et al. 2019. Mol. Cancer Res. 17: 1597-1604.
2. Song, R., et al. 2020. Carcinogenesis 41: 326-333.



©2022 Biolynx.cn

Immunohistochemistry (Formalin/PFA-fixed paraffin-embedded sections) analysis of small cell neuroendocrine carcinoma labelling INSM-1 with BP6240.

Product QC'd by:



For research use only. Not for use in diagnostic or therapeutic applications.