

BAP-1 Recombinant Rabbit Monoclonal Antibody Product Datasheet

Catalog# BX50278

Clone# BP6255

Predicted Molecular Wt: 80kDa
Species Cross-reactivity: Human
Applications: IHC-P

Purity: ProA affinity purified IgG
Form: Liquid
Swissprot ID: Q92560

Background:

BAP-1 (BRCA-1 Associated Protein-1) is an 80 kDa protein known to function as a deubiquitinase (DUB); removing ubiquitin modifiers, which alter the function of other proteins via targeted degradation, subcellular localization, or activity. By removing ubiquitin, BAP-1 helps regulate the function of target proteins involved in diverse cellular processes.

BAP-1 was expressed in most normal cells, but deletion of expression has been found in mesothelioma.

Germline mutations in the BAP-1 gene have been associated with BAP-1 tumor predisposition syndrome, a condition linked to early onset and/or increased risk of multiple types of cancers including uveal melanoma, malignant mesothelioma, cutaneous melanoma, and renal cell carcinoma.

Subcellular location:

Nucleus

Recommended Method:

Heat induced epitope retrieval with Tris-EDTA buffer (pH 9.0), primary antibody incubate at RT (18°C-25°C) for 30 minutes.

Immunogen:

Synthetic peptide. This information is proprietary to BioLynx.

Storage Buffer:

PBS 59%, Sodium azide 0.01%, Glycerol 40%, BSA 0.05%.

Storage Conditions:

-25°C to -18°C

Shipment Instructions:

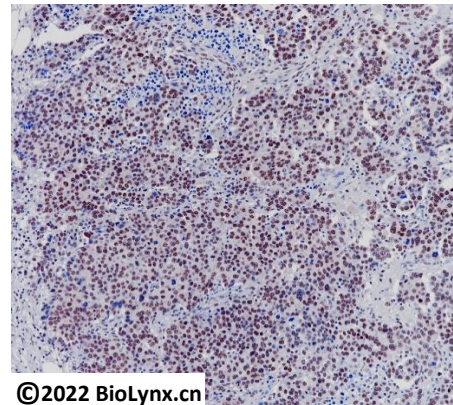
Shipped on blue ice. Upon delivery store at -25°C to -18°C. Avoid freeze / thaw cycles.

Recommended Dilution:

IHC-P: 1:100-1:200

Background References:

1. Citterio E. Front Genet. 2015; 6:282.
2. Murali R, Wiesner T, Scolyer RA. Pathology. 2013 Feb; 45(2):116-26.



Immunohistochemistry (Formalin/PFA-fixed paraffin-embedded sections) analysis of human mesothelioma labelling BAP-1 with BP6255.

Product QC'd by:



For research use only. Not for use in diagnostic or therapeutic applications.