

AFP Recombinant Rabbit Monoclonal Antibody Product Datasheet

Catalog# BX50267

Clone# BP6244

Predicted Molecular Wt: 67kDa
Species Cross-reactivity: Human
Applications: IHC-P

Purity: ProA affinity purified IgG
Form: Liquid
Swissprot ID: P02771

Background:

Alpha-fetoprotein (AFP) is a 65 kDa glycoprotein found in the mammalian fetal liver, yolk sac, and GI tract. While AFP expression in adult cells is low, it is aberrantly expressed in adult liver cancer cells. The tumor suppressor gene p53 and β -catenin are both involved in the regulation of AFP expression. In normal adult cells, p53 binds to the repressor region of the AFP gene, thereby blocking transcription. Mutations in both p53 and β -catenin are associated with aberrant expression of AFP. Research studies have shown that elevated serum AFP levels are predictive of hepatocellular carcinoma.

AFP is not expressed in adult liver tissue, but it is aberrantly expressed in adult liver cancer cells.

AFP is mainly used in clinical diagnosis of hepatocellular carcinoma.

Subcellular location:

Cytoplasmic

Recommended Method:

Heat induced epitope retrieval with Tris-EDTA buffer (pH 9.0), primary antibody incubate at RT (18°C-25°C) for 30 minutes.

Immunogen:

Synthetic peptide. This information is proprietary to Biolynx.

Storage Buffer:

PBS 59%, Sodium azide 0.01%, Glycerol 40%, BSA 0.05%.

Storage Conditions:

-25°C to -18°C

Shipment Instructions:

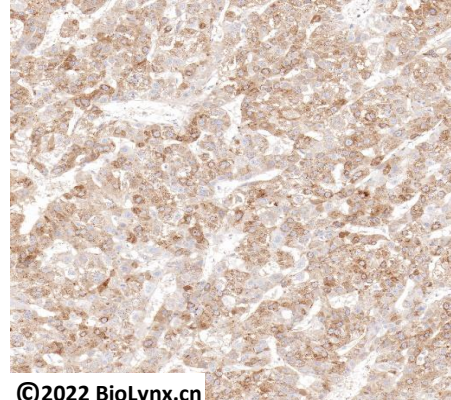
Shipped on blue ice. Upon delivery store at -25°C to -18°C. Avoid freeze / thaw cycles.

Recommended Dilution:

IHC-P: 1:100-1:200

Background References:

1. Meier, V. et al. (2006) Comp Hepatol 5, 2.
2. Peng, S.Y. et al. (2004) Int J Cancer 112, 44-50.



©2022 Biolynx.cn

Immunohistochemistry (Formalin/PFA-fixed paraffin-embedded sections) analysis of hepatocellular carcinoma labelling AFP with BP6244.

Product QC'd by:



For research use only. Not for use in diagnostic or therapeutic applications.