

SALL4 Recombinant Rabbit Monoclonal Antibody Product Datasheet

Catalog# BX50268

Clone# BP6245

Predicted Molecular Wt: 112kDa

Species Cross-reactivity: Human

Applications: IHC-P

Purity: ProA affinity purified IgG

Form: Liquid

Swissprot ID: Q9UJQ4

Background:

Sal-like protein 4 (SALL4) serves as a master regulator of embryonic pluripotency and is involved in processes associated with stem cell activities. Members of the SALL gene family encode putative zinc finger transcription factors highly expressed during development.

SALL4 is expressed very early in development with other pluripotency regulators, such as Oct-4 and Nanog. SALL4 expression in germ cells makes it a useful marker for germ cell tumors such as seminoma, embryonal carcinoma, yolk sac tumors and teratomas. SALL4 expression is also seen in the spermatogonia of normal testis.

Subcellular location:

Nucleus

Recommended Method:

Heat induced epitope retrieval with Tris-EDTA buffer (pH 9.0), primary antibody incubate at RT (18°C-25°C) for 30 minutes.

Immunogen:

Synthetic peptide. This information is proprietary to Biolynx.

Storage Buffer:

PBS 59%, Sodium azide 0.01%, Glycerol 40%, BSA 0.05%.

Storage Conditions:

-25°C to -18°C

Shipment Instructions:

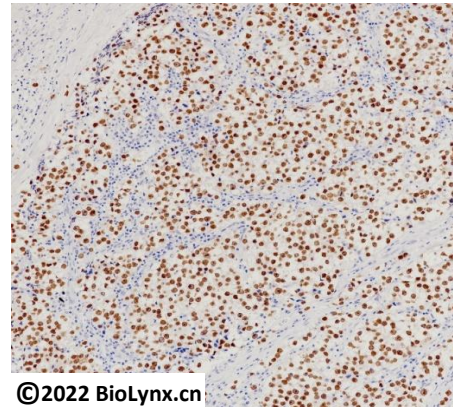
Shipped on blue ice. Upon delivery store at -25°C to -18°C. Avoid freeze / thaw cycles.

Recommended Dilution:

IHC-P: 1:100-1:200

Background References:

1. Reimer M et al. BMC Dev Biol 19:16 (2019).
2. Tahara N et al. Development 146:N/A (2019).



©2022 Biolynx.cn

Immunohistochemistry (Formalin/PFA-fixed paraffin-embedded sections) analysis of human seminoma tissue labelling SALL4 with BP6245.

Product QC'd by:



For research use only. Not for use in diagnostic or therapeutic applications.