

## Neurofilament Mouse Monoclonal Antibody Product Datasheet

Catalog# BX50249

Clone# BPM6226

**Predicted Molecular Wt:** 102kDa

**Species Cross-reactivity:** Human

**Applications:** IHC-P

**Purity:** ProA affinity purified IgG

**Form:** Liquid

**Swissprot ID:** P07197

### Background:

Neurofilaments are the major intermediate filaments found in neurons and consist of light (NFL), medium (NFM), and heavy (NFH) subunits. Similar in structure to other intermediate filament proteins, neurofilaments have a globular amino-terminal head, a central  $\alpha$ -helical rod domain, and a carboxy-terminal tail. A heterotetrameric unit (NFL-NFM and NFL-NFH) forms a protofilament, with eight protofilaments comprising the typical 10 nm intermediate filament.

Research studies have shown neurofilament accumulations in many human neurological disorders including Parkinson's disease (in Lewy bodies along with  $\alpha$ -synuclein), Alzheimer's disease, Charcot-Marie-Tooth disease, and Amyotrophic Lateral Sclerosis (ALS).

Neurofilament antibody mainly stains neurons in tissue sections of brain and other tissues. Neurofilament has been shown to react with neuroblastomas, gangliomas, pheochromocytomas, Merkel cell tumors and carcinoid tumors.

### Subcellular location:

Cytoplasm

### Recommended Method:

Heat induced epitope retrieval with Tris-EDTA buffer (pH 9.0), primary antibody incubate at RT (18°C-25°C) for 30 minutes.

### Immunogen:

Recombinant fragment within Human HBsAg was used as an immunogen.

### Storage Buffer:

PBS 59%, Sodium azide 0.01%, Glycerol 40%, BSA 0.05%.

### Storage Conditions:

-25°C to -18°C

### Shipment Instructions:

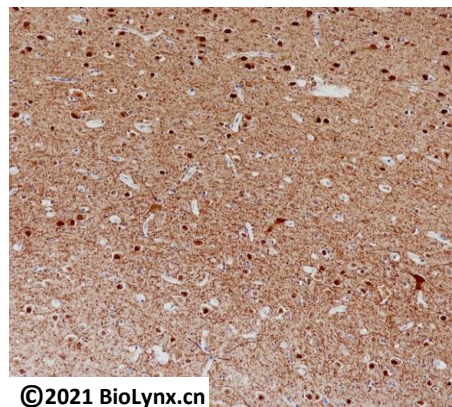
Shipped on blue ice. Upon delivery store at -25°C to -18°C. Avoid freeze / thaw cycles.

### Recommended Dilution:

IHC-P: 1:100-1:200

### Background References:

1. Franquemont DW, et al. Am J Clin Pathol 1994 Aug;102(2):163-70.
2. Diepholder HM, et al. Cancer 1991 Nov 15;68(10):2192-201.



©2021 BioLynx.cn

Immunohistochemistry (Formalin/PFA-fixed paraffin-embedded sections) analysis of brain labelling Neurofilament with BPM6226.

Product QC'd by:



For research use only. Not for use in diagnostic or therapeutic applications.