

## Caldesmon Mouse Monoclonal Antibody Product Datasheet

Catalog# BX50166

Clone# h-CALD

**Predicted Molecular Wt:** 93.2kDa

**Species Cross-reactivity:** Human

**Applications:** IHC-P

**Purity:** ProG affinity purified IgG

**Form:** Liquid

**Swissprot ID:** Q05682

### Background:

Anti-caldesmon is a regulatory protein found in smooth muscle and other tissues which interacts with actin, myosin, tropomyosin, and calmodulin. Anti-caldesmon antibody labels smooth muscle and tumors of smooth muscle, myofibroblastic, and myoepithelial differentiation. Anti-caldesmon has also been used to differentiate epithelioid mesothelioma from serous papillary carcinoma of the ovary.

### Subcellular location:

Cytoplasm

### Recommended method:

Heat induced epitope retrieval with Tris-EDTA buffer (pH 9.0), primary antibody incubate at RT (18°C-25°C) for 30 minutes.

### Immunogen:

Synthetic peptide corresponding to Caldesmon was used as an immunogen. The exact sequence is proprietary.

### Storage conditions:

2°C-8°C

### Storage instructions:

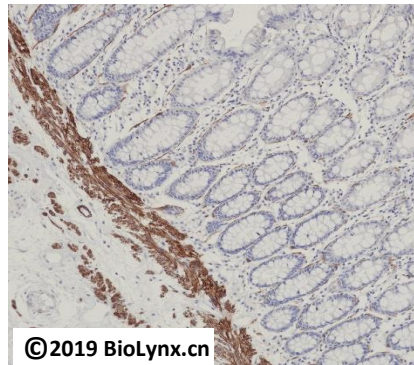
Shipped on blue ice. Upon delivery, aliquot, and store at -20°C. Avoid freeze / thaw cycles.

### Recommended Dilutions:

IHC-P: 1:100-1:200

### Background References:

1. Nakagaki-Silva EE et al. Elife 8: (2019).
2. Domke LM . Cell Tissue Res (2018).



Immunohistochemistry (Formalin/PFA-fixed paraffin-embedded sections) analysis of human Colon tissue labelling Caldesmon with h-CALD. Heat mediated antigen retrieval was performed using Tris/EDTA buffer pH 9.0

Product QC'd by:



For research use only. Not for use in diagnostic or therapeutic applications.