

## PSA Recombinant Rabbit Monoclonal Antibody Product Datasheet

Catalog# BX00062

Clone# RR666

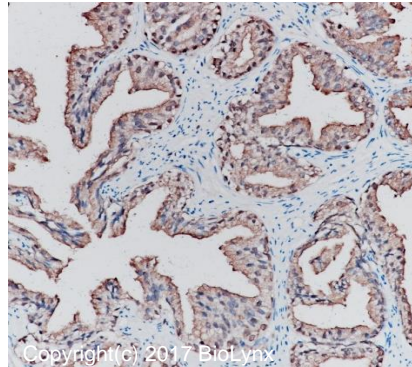
**Predicted Molecular Wt:** 29kDa  
**Species Cross-reactivity:** Human

**Purity:** ProA affinity purified IgG  
**Form:** Liquid  
**Swissprot ID:** P07288

**Applications:** IHC-P

### Background:

Prostate-specific antigen (PSA) is a single-chain 34-kd glycoprotein of 237 amino acids containing approximately 8% carbohydrate. It is a serine protease produced almost exclusively by prostatic epithelial cells. PSA has chymotrypsin-like, trypsin-like and esterase-like activity. From the epithelial cells of the prostate, PSA is secreted via the prostatic ductal system into seminal plasma, where it catalyses the liquefaction of the seminal coagulum after ejaculation.



Immunohistochemistry (Formalin/PFA-fixed paraffin-embedded sections) analysis of Prostate cancer tissue labelling PSA with RR666 at 1:200. Heat mediated antigen retrieval was performed using Tris/EDTA buffer pH 9.0.

### Immunogen:

A synthetic peptide corresponding to PSA residues within aa200-300 of PSA was used as an immunogen.

### Storage Buffer:

PBS 59%, Sodium azide 0.01%, Glycerol 40%, BSA 0.05%.

### Storage conditions:

-20°C.

### Storage instructions:

Shipped on blue ice. Upon delivery, aliquot, and store at -20°C. Avoid freeze / thaw cycles.

### Recommended Dilutions:

IHC-P: 1:100 - 1:200

### Background References:

1. Zhu L et al. Exp Ther Med 12:1181-1184 (2016).
2. Usuda H. Pathol Int 55:596-601 (2005).

Product QC'd by:



For research use only. Not for use in diagnostic or therapeutic applications.