

S100P Recombinant Rabbit Monoclonal Antibody Product Datasheet

Catalog# BX00032

Clone# RR636

Predicted Molecular Wt: 10kDa
Species Cross-reactivity: Human

Purity: ProA affinity purified IgG
Form: Liquid
Swissprot ID: P25815

Applications: IHC-P IF/ICC FC

Background:

May function as calcium sensor and contribute to cellular calcium signaling. In a calcium-dependent manner, functions by interacting with other proteins, such as EZR and PPP5C, and indirectly plays a role in physiological processes like the formation of microvilli in epithelial cells. May stimulate cell proliferation in an autocrine manner via activation of the receptor for activated glycation end products.

Immunogen:

A synthetic peptide corresponding to residues on the C-terminus of human S100P was used as an immunogen.

Storage Buffer:

PBS 59%, Sodium azide 0.01%, Glycerol 40%, BSA 0.05%.

Storage conditions:

-20°C.

Storage instructions:

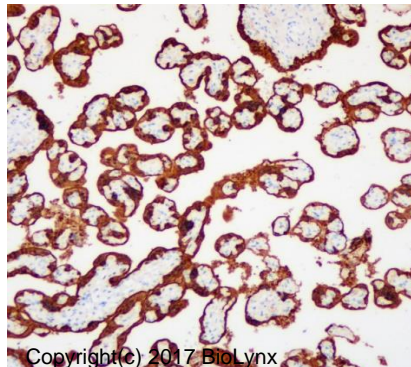
Shipped on blue ice. Upon delivery, aliquot, and store at -20°C. Avoid freeze / thaw cycles.

Recommended Dilutions:

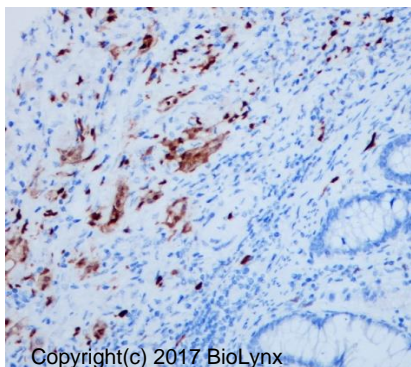
IHC-P: 1:200 - 1:400
 IF/ICC: 1:1,000 - 1:2,000
 FC: 1:10 - 1:50

Background References:

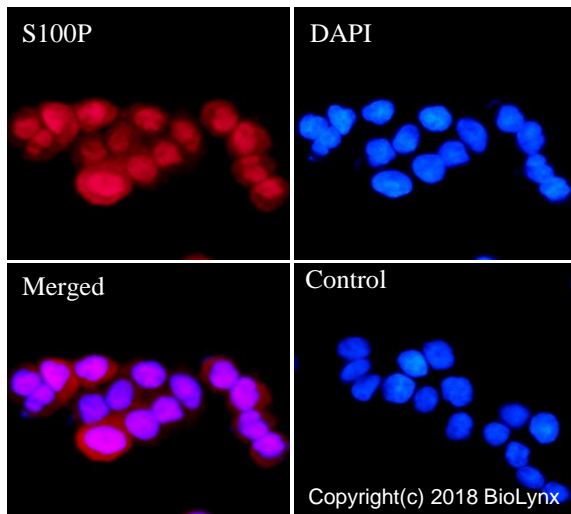
- Arumugam T. et al.
 J. Biol. Chem. 279:5059-5065(2004)
- Yamaguchi F. et al.
 J. Biol. Chem. 287:13787-13798(2012)



Immunohistochemistry (Formalin/PFA-fixed paraffin-embedded sections) analysis of human placenta tissue labelling S100P with RR636 at 1:200. Heat mediated antigen retrieval was performed using Tris/EDTA buffer pH 9.0.

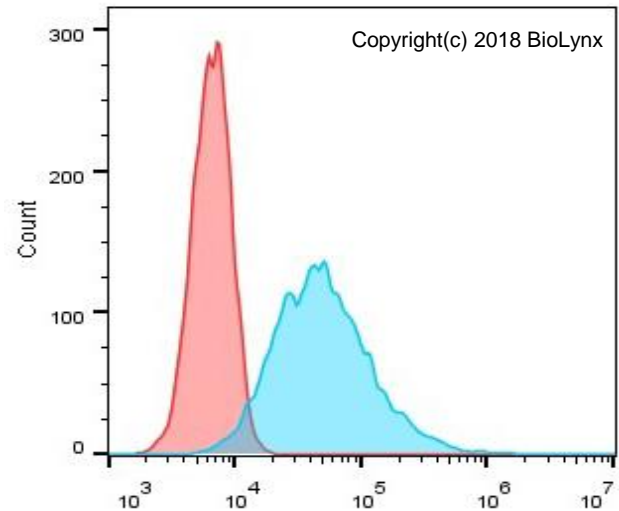


Immunohistochemistry (Formalin/PFA-fixed paraffin-embedded sections) analysis of human colon tissue labelling S100P with RR636 at 1:200. Heat mediated antigen retrieval was performed using Tris/EDTA buffer pH 9.0.



RR636 staining S100P in HT-29 cells by IF/ICC (immunofluorescence/immunocytochemistry). Cells were fixed with paraformaldehyde, permeabilized with 0.1% Triton X-100 and blocked with 10% goat serum for half an hour at room temperature. Samples were incubated with primary antibody (1:2,000) at 4°C. An Alexa Fluor® 594-conjugated Goat Anti-Rabbit IgG polyclonal was used as the secondary antibody (1:500). DAPI (blue) was used as the nuclear counter stain.

Control: PBS and secondary antibody, An Alexa Fluor® 594-conjugated Goat Anti-Rabbit IgG (1:500).



Overlay histogram showing BxPC-3 cells stained with RR636 (Blue). The cells were fixed with 4% paraformaldehyde (10 min) and then permeabilized with 0.1% TritonX-100 for 15 min. The cells were then incubated in the antibody (RR636, 1:50 dilution) in 1x PBS/1% BSA for 30 min at room temperature. The secondary antibody used was a Goat Anti-Rabbit Alexa Fluor® 488 (IgG H+L) at 1:2,000 dilution for 20 min at room temperature. Unlabelled sample (Red) was used as a control.

Product QC'd by:



For research use only. Not for use in diagnostic or therapeutic applications.