

## HER-2 Recombinant Rabbit Monoclonal Antibody Product Datasheet

Catalog# BX00034

Clone# RR638

**Predicted Molecular Wt:** 138kDa

**Species Cross-reactivity:** Human

**Purity:** ProA affinity purified IgG

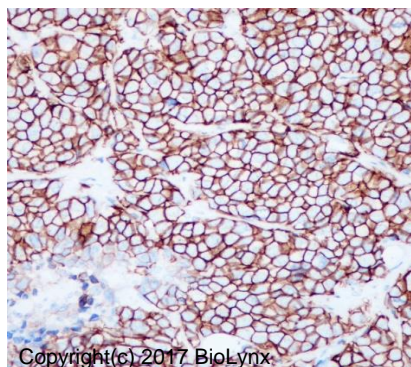
**Form:** Liquid

**Swissprot ID:** P04626

**Applications:** IHC-P

### Background:

Protein tyrosine kinase that is part of several cell surface receptor complexes, but that apparently needs a coreceptor for ligand binding. Essential component of a neuregulin-receptor complex, although neuregulins do not interact with it alone. GP30 is a potential ligand for this receptor. Regulates outgrowth and stabilization of peripheral microtubules (MTs).



Immunohistochemistry (Formalin/PFA-fixed paraffin-embedded sections) analysis of human breast cancer tissue labelling HER-2 with RR638 at 1:500. Heat mediated antigen retrieval was performed using Tris/EDTA buffer pH 9.0.

### Immunogen:

A synthetic peptide corresponding to residues on the C-terminus of human HER-2 was used as an immunogen.

### Storage Buffer:

PBS 59%, Sodium azide 0.01%, Glycerol 40%, BSA 0.05%.

### Storage conditions:

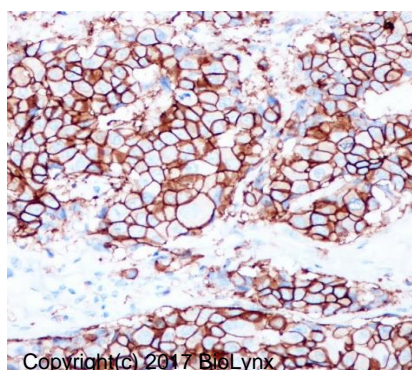
-20°C.

### Storage instructions:

Shipped on blue ice. Upon delivery, aliquot, and store at -20°C. Avoid freeze / thaw cycles.

### Recommended Dilutions:

IHC-P: 1:100 - 1:200



Immunohistochemistry (Formalin/PFA-fixed paraffin-embedded sections) analysis of human breast cancer tissue labelling HER-2 with RR638 at 1:500. Heat mediated antigen retrieval was performed using Tris/EDTA buffer pH 9.0.

### Background References:

1. Humtsoe JO et al. Oncogene 35:1554-64 (2016).
2. Cheng Q et al. Sci Rep 6:28987 (2016).

Product QC'd by:



For research use only. Not for use in diagnostic or therapeutic applications.