

MUC 1 Recombinant Rabbit Monoclonal Antibody Product Datasheet

Catalog# BX00048

Clone# RR652

Predicted Molecular Wt: 122kDa

Species Cross-reactivity: Human

Purity: ProA affinity purified IgG

Form: Liquid

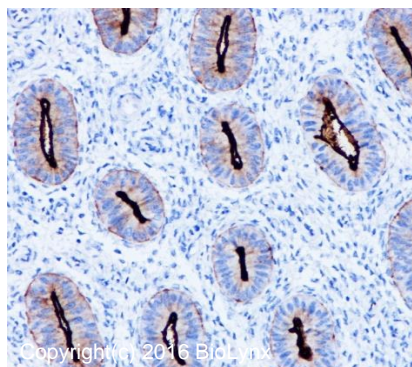
Swissprot ID: P15941

Applications: IHC-P

Background:

The alpha subunit has cell adhesive properties. Can act both as an adhesion and an anti-adhesion protein. May provide a protective layer on epithelial cells against bacterial and enzyme attack.

The beta subunit contains a C-terminal domain which is involved in cell signaling, through phosphorylations and protein-protein interactions. Modulates signaling in ERK, SRC and NF-kappa-B pathways. In activated T-cells, influences directly or indirectly the Ras/MAPK pathway.



Immunohistochemistry (Formalin/PFA-fixed paraffin-embedded sections) analysis of human Uterus tissue labelling MUC1 with RR652 at 1:200. Heat mediated antigen retrieval was performed using Tris/EDTA buffer pH 9.0.

Immunogen:

A synthetic peptide corresponding to residues on the C-terminus of human MUC1 was used as an immunogen.

Storage Buffer:

PBS 59%, Sodium azide 0.01%, Glycerol 40%, BSA 0.05%.

Storage conditions:

-20°C.

Storage instructions:

Shipped on blue ice. Upon delivery, aliquot, and store at -20°C. Avoid freeze / thaw cycles.

Recommended Dilutions:

IHC-P: 1:100 - 1:200

Background References:

1. Croce MV, et.al, J Histochem Cytochem. 2003 Jun;51(6):781-8.
2. Nakamori S, et.al, Gastroenterology. 1994 Feb;106(2):353-61.

Product QC'd by:



For research use only. Not for use in diagnostic or therapeutic applications.