

ER alpha Recombinant Rabbit Monoclonal Antibody Product Datasheet

Catalog# BX00042

Clone# RR646

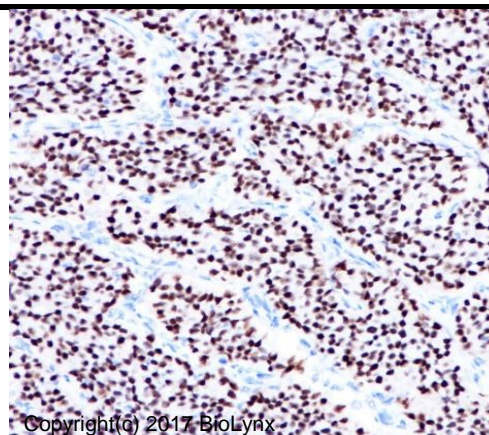
Predicted Molecular Wt: 66kDa
Species Cross-reactivity: Human

Purity: ProA affinity purified IgG
Form: Liquid
Swissprot ID: P03372

Applications: IHC-P IF/ICC

Background:

Nuclear hormone receptor. The steroid hormones and their receptors are involved in the regulation of eukaryotic gene expression and affect cellular proliferation and differentiation in target tissues. Ligand-dependent nuclear transactivation involves either direct homodimer binding to a palindromic estrogen response element (ERE) sequence or association with other DNA-binding transcription factors, such as AP-1/c-Jun, c-Fos, ATF-2, Sp1 and Sp3, to mediate ERE-independent signaling.



Copyright(c) 2017 BioLynx

Immunogen:

A synthetic peptide corresponding to residues on the C-terminus of human ER alpha was used as an immunogen.

Immunohistochemistry (Formalin/PFA-fixed paraffin-embedded sections) analysis of ER+ breast cancer tissue labelling ER alpha with RR646 at 1:100. Heat mediated antigen retrieval was performed using Tris/EDTA buffer pH 9.0.

Storage Buffer:

PBS 59%, Sodium azide 0.01%, Glycerol 40%, BSA 0.05%.

Storage conditions:

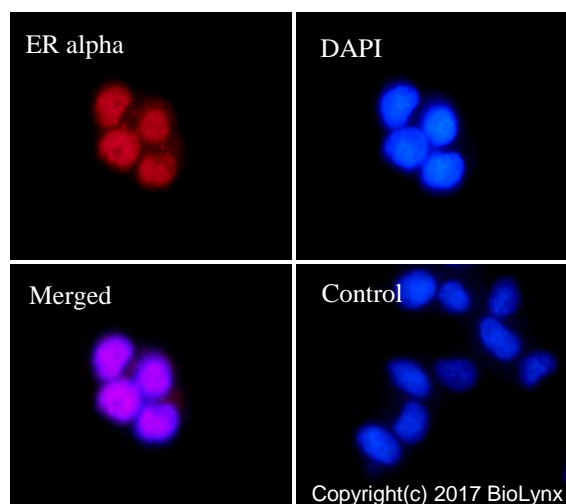
-20°C.

Storage instructions:

Shipped on blue ice. Upon delivery, aliquot, and store at -20°C. Avoid freeze / thaw cycles.

Recommended Dilutions:

IHC-P: 1:100 - 1:200
IF/ICC: 1:25 - 1:50



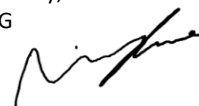
Copyright(c) 2017 BioLynx

Background References:

- Stein B, et.al, Mol Cell Biol. 1995 Sep;15(9):4971-9.
- Saville B, et.al, J Biol Chem. 2000 Feb 25;275(8):5379-87.

RR646 staining ER alpha in MCF-7 cells by IF/ICC (Immunocytochemistry/immunofluorescence). Cells were fixed with paraformaldehyde, permeabilized with 0.1% Triton X-100 and blocked with 10% goat serum for half an hour at room temperature. Samples were incubated with primary antibody (1:50) at 4°C. An Alexa Fluor® 594-conjugated Goat Anti-Rabbit IgG polyclonal was used as the secondary antibody (1:500). DAPI (blue) was used as the nuclear counter stain. Control: PBS and secondary antibody, An Alexa Fluor® 594-conjugated Goat Anti-Rabbit IgG

Product QC'd by:



For research use only. Not for use in diagnostic or therapeutic applications.

