

GM130 Recombinant Rabbit Monoclonal Antibody Product Datasheet

Catalog# BX00013

Clone# RR614

Predicted Molecular Wt: 113kDa

Species Cross-reactivity: Human

Species cross-reactivity determined by WB

Purity: ProA affinity purified IgG

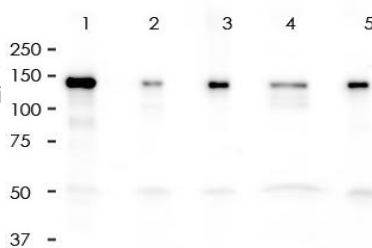
Form: Liquid

Swissprot ID: Q08379

Applications: WB IHC-P IF/ICC FC

Background:

Peripheral membrane component of the cis-Golgi stack that acts as a membrane skeleton that maintains the structure of the Golgi apparatus, and as a vesicle tether that facilitates vesicle fusion to the Golgi membrane. Together with p115/USO1 and STX5, involved in vesicle tethering and fusion at the cis-Golgi membrane to maintain the stacked and inter-connected structure of the Golgi apparatus.



Copyright(c) 2017 BioLynx

All lanes: Anti-GM130 antibody
at 1:2,000 dilution
Predicted MW: 113 kDa
Observed MW: 130 kDa
Lane 1: Hela
Lane 2: MCF-7
Lane 3: A549
Lane 4: HepG2
Lane 5: Raji

Immunogen:

A synthetic peptide corresponding to residues on the N-terminus of human GM130 was used as an immunogen.

Storage Buffer:

PBS 59%, Sodium azide 0.01%, Glycerol 40%, BSA 0.05%.

Storage conditions:

-20°C.

Storage instructions:

Shipped on blue ice. Upon delivery, aliquot, and store at -20°C. Avoid freeze / thaw cycles.

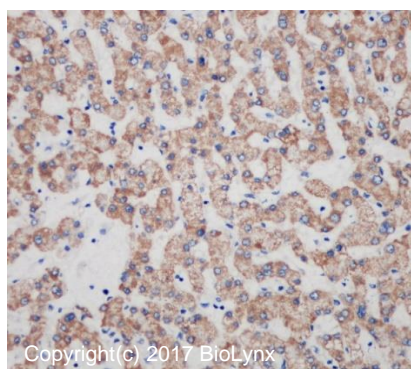
Recommended Dilutions:

WB: 1:5,000 - 1:10,000
IHC-P: 1:100 - 1:200
IF/ICC: 1:800 - 1:2,000
FC: 1:50 - 1:200

Background References:

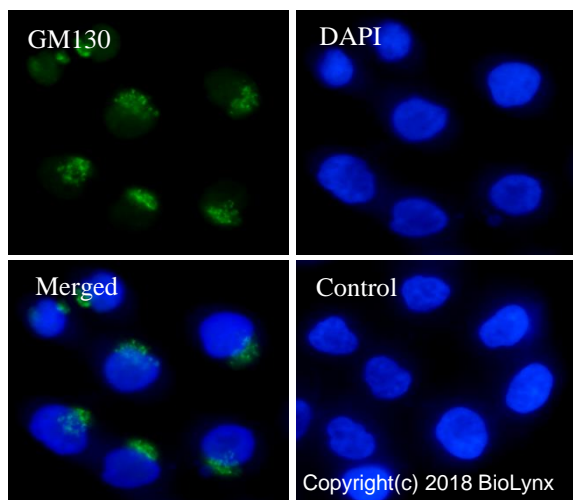
1. Raza S et al. Oncotarget N/A:N/A (2016).
2. Mazzulli JR et al., Proc Natl Acad Sci USA 113:1931-6 (2016).

Lysate at 10 µg per lane
2nd Ab:
G&R HRP(H+L) 1:10,000
Exposure: 100s



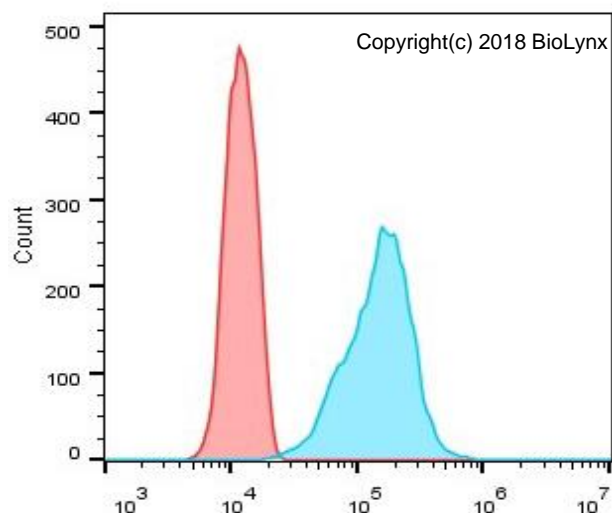
Copyright(c) 2017 BioLynx

Immunohistochemistry
(Formalin/PFA-fixed paraffin-embedded sections)
analysis of human liver tissue labelling GM130 with RR614 at 1:200. Heat mediated antigen retrieval was performed using Tris/EDTA buffer pH 9.0.



RR614 staining GM130 in HeLa cells by IF/ICC (immunofluorescence/immunocytochemistry). Cells were fixed with paraformaldehyde, permeabilized with 0.1% Triton X-100 and blocked with 10% goat serum for half an hour at room temperature. Samples were incubated with primary antibody (1:2,000) at 4°C. An Alexa Fluor® 488-conjugated Goat Anti-Rabbit IgG polyclonal was used as the secondary antibody (1:500). DAPI (blue) was used as the nuclear counter stain.

Control: PBS and secondary antibody, An Alexa Fluor® 488-conjugated Goat Anti-Rabbit IgG (1:500).



Overlay histogram showing HeLa cells stained with RR614 (Blue). The cells were fixed with 4% paraformaldehyde (10 min) and then permeabilized with 0.1% TritonX-100 for 15 min. The cells were then incubated in the antibody (RR614, 1:200 dilution) in 1x PBS/1% BSA for 30 min at 4°C. The secondary antibody used was a Goat Anti-Rabbit Alexa Fluor® 488 (IgG H+L) at 1:2,000 dilution for 20 min at 4°C. Unlabelled sample (Red) was used as a control.

Product QC'd by:



For research use only. Not for use in diagnostic or therapeutic applications.