

MUC16/CA125 Recombinant Rabbit Monoclonal Antibody Product Datasheet

Catalog# BX00026

Clone# RR629

Predicted Molecular Wt: 1519kDa

Species Cross-reactivity: Human

Purity: ProA affinity purified IgG

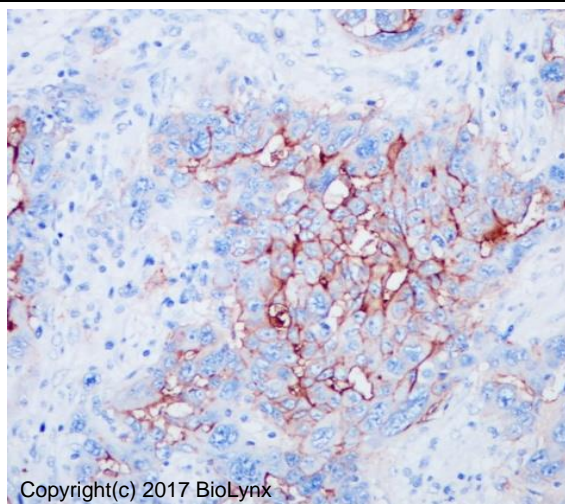
Form: Liquid

Swissprot ID: Q8WXI7

Applications: IHC-P FC

Background:

Thought to provide a protective, lubricating barrier against particles and infectious agents at mucosal surfaces.



Immunogen:

A synthetic peptide corresponding to residues within aa12200-12300 was used as an immunogen.

Storage Buffer:

PBS 59%, Sodium azide 0.01%, Glycerol 40%, BSA 0.05%.

Storage conditions:

-20°C.

Storage instructions:

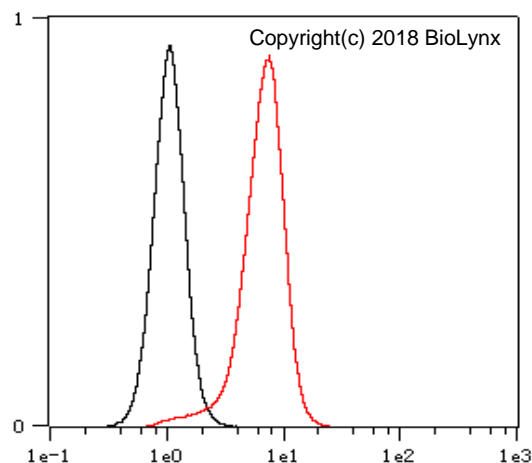
Shipped on blue ice. Upon delivery, aliquot, and store at -20°C. Avoid freeze / thaw cycles.

Recommended Dilutions:

IHC-P: 1:200 - 1:400

FC: 1:200 - 1:800

Immunohistochemistry (Formalin/PFA-fixed paraffin-embedded sections) analysis of human ovarian cancer tissue labelling CA-125 with RR629 at 1:400. Heat mediated antigen retrieval was performed using Tris/EDTA buffer pH 9.0.

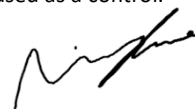


Background References:

1. Zhang H et al. J Ovarian Res 8:19 (2015).
2. Vitiazeva V et al. PLoS One 10:e0130197 (2015).

Overlay histogram showing HeLa cells stained with RR629 (Red). The cells were fixed with 4% paraformaldehyde (10 min) and then permeabilized with 0.1% TritonX-100 for 15 min. The cells were then incubated in the antibody (RR629, 1:800 dilution) in 1x PBS/1% BSA for 30 min at room temperature. The secondary antibody used was a Goat Anti-Rabbit Alexa Fluor® 488 (IgG H+L) at 1:2,000 dilution for 20 min at room temperature. Unlabelled sample (Black) was used as a control.

Product QC'd by:



For research use only. Not for use in diagnostic or therapeutic applications.