

p21 Recombinant Rabbit Monoclonal Antibody Product Datasheet

Catalog# BX00103

Clone# RR707

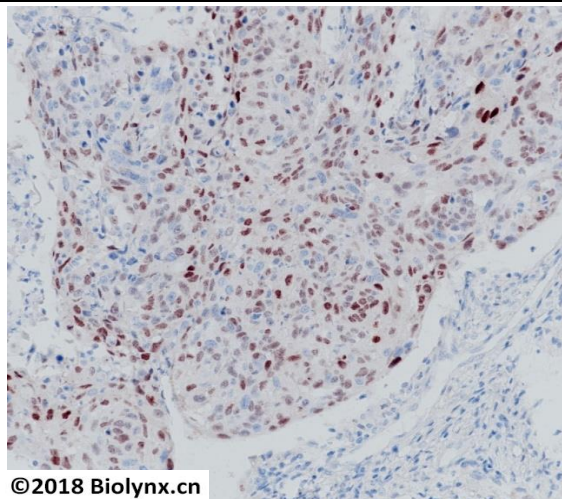
Predicted Molecular Wt: 18kDa
Species Cross-reactivity: Human

Purity: ProA affinity purified IgG
Form: Liquid
Swissprot ID: P38936

Applications: IHC-P IF/ICC FC

Background:

May be the important intermediate by which p53/TP53 mediates its role as an inhibitor of cellular proliferation in response to DNA damage. Binds to and inhibits cyclin-dependent kinase activity, preventing phosphorylation of critical cyclin-dependent kinase substrates and blocking cell cycle progression. Functions in the nuclear localization and assembly of cyclin D-CDK4 complex and promotes its kinase activity towards RB1. At higher stoichiometric ratios, inhibits the kinase activity of the cyclin D-CDK4 complex.



©2018 Biolynx.cn

Immunogen:

A synthetic peptide corresponding to residues aa1-100 of human p21 was used as an immunogen.

Immunohistochemistry (Formalin/PFA-fixed paraffin-embedded sections) analysis of human cervix cancer tissue labelling p21 with RR707 at 1:200. Heat mediated antigen retrieval was performed using Tris/EDTA buffer pH 9.0.

Storage Buffer:

PBS 59%, Sodium azide 0.01%, Glycerol 40%, BSA 0.05%.

Storage conditions:

-20°C.

Storage instructions:

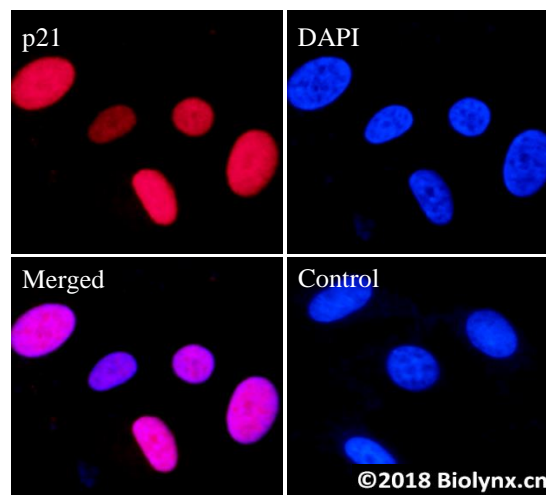
Shipped on blue ice. Upon delivery, aliquot, and store at -20°C. Avoid freeze / thaw cycles.

Recommended Dilutions:

IHC-P: 1:200 - 1:300
IF/ICC: 1:200 - 1:800
FC: 1:50 - 1:200

Background References:

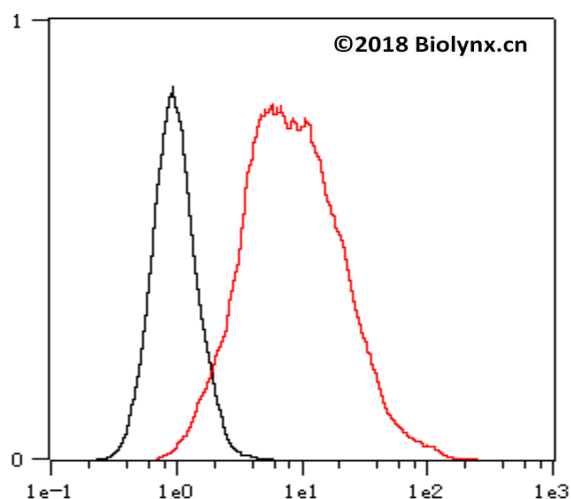
- Chen L et al. Theranostics 7:2634-2648 (2017).
- Zheng Y et al. PeerJ 5:e3627 (2017).



©2018 Biolynx.cn

RR707 staining p21 in MCF-7 cells by IF/ICC (immunofluorescence/immunocytochemistry). Cells were fixed with paraformaldehyde, permeabilized with 0.1% Triton X-100 and blocked with 10% goat serum for half an hour at room temperature. Samples were incubated with primary antibody (1:800) at 4°C. An Alexa Fluor® 594-conjugated Goat Anti-Rabbit IgG polyclonal was used as the secondary antibody (1:500). DAPI (blue) was used as the nuclear counter stain.

Control: PBS and secondary antibody, An Alexa Fluor® 594-conjugated Goat Anti-Rabbit IgG (1:500).



Overlay histogram showing MCF-7 cells stained with RR707 (Red). The cells were fixed with 4% paraformaldehyde (10 min) and then permeabilized with 0.1% TritonX-100 for 15 min. The cells were then incubated in the antibody (RR707, 1:200 dilution) in 1x PBS/1% BSA for 30 min at room temperature. The secondary antibody used was a Goat Anti-Rabbit Alexa Fluor® 488 (IgG H+L) at 1:2,000 dilution for 20 min at room temperature. Unlabelled sample (Black) was used as a control.

Product QC'd by:



For research use only. Not for use in diagnostic or therapeutic applications.