

## E-Cadherin Recombinant Rabbit Monoclonal Antibody Product Datasheet

Catalog# BX00014

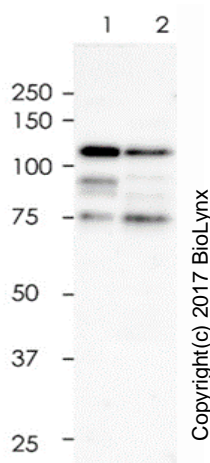
Clone# RR619

**Predicted Molecular Wt:** 97kDa  
**Species Cross-reactivity:** Human  
*Species cross-reactivity determined by WB*  
**Applications:** WB IHC-P

**Purity:** ProA affinity purified IgG  
**Form:** Liquid  
**Swissprot ID:** P12830

### Background:

Cadherins are calcium-dependent cell adhesion proteins. They preferentially interact with themselves in a homophilic manner in connecting cells; cadherins may thus contribute to the sorting of heterogeneous cell types. CDH1 is involved in mechanisms regulating cell-cell adhesions, mobility and proliferation of epithelial cells. Has a potent invasive suppressor role. It is a ligand for integrin alpha-E/beta-7. E-Cad/CTF2 promotes non-amyloidogenic degradation of Abeta precursors. Has a strong inhibitory effect on APP C99 and C83 production.



All lanes: Anti-E-Cadherin antibody at 1:5,000 dilution

Predicted MW: 97 kDa  
Observed MW: 100-150 kDa

Lane 1: MCF-7  
Lane 2: A431

Lysate at 10 µg per lane  
2nd Ab:  
G&R HRP(H+L) 1:10,000

Exposure: 120s

### Immunogen:

A synthetic peptide corresponding to E-Cadherin residues within aa 600-700 of human E-Cadherin was used as an immunogen.

### Storage Buffer:

PBS 59%, Sodium azide 0.01%, Glycerol 40%, BSA 0.05%.

### Storage conditions:

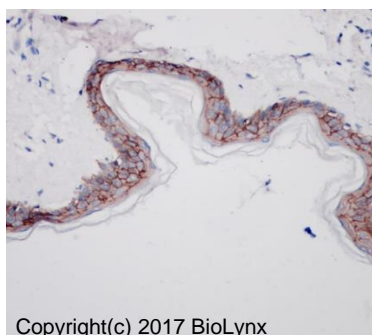
-20°C.

### Storage instructions:

Shipped on blue ice. Upon delivery, aliquot, and store at -20°C. Avoid freeze / thaw cycles.

### Recommended Dilutions:

WB: 1:5,000 - 1:10,000  
IHC-P: 1:25 - 1:50



Immunohistochemistry (Formalin/PFA-fixed paraffin-embedded sections) analysis of human colon tissue labelling E-Cadherin with RR619 at 1:50. Heat mediated antigen retrieval was performed using Tris/EDTA buffer pH 9.0.

### Background References:

1. Agiostratidou G., J. Neurochem. 96:1182-1188(2006)
2. Yabuta T., J. Cancer 101:434-441(2002)

Product QC'd by:



For research use only. Not for use in diagnostic or therapeutic applications.