

## CD31 Recombinant Rabbit Monoclonal Antibody Product Datasheet

Catalog# BX00101

Clone# RR705

**Predicted Molecular Wt:** 83kDa

**Purity:** ProA affinity purified IgG

**Species Cross-reactivity:** Human

**Form:** Liquid

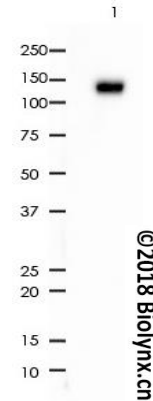
*Species cross-reactivity determined by WB*

**Swissprot ID:** P16284

**Applications:** WB IHC-P FC IP

### Background:

Induces susceptibility to atherosclerosis (By similarity). Cell adhesion molecule which is required for leukocyte transendothelial migration (TEM) under most inflammatory conditions. Tyr-690 plays a critical role in TEM and is required for efficient trafficking of PECAM1 to and from the lateral border recycling compartment (LBRC) and is also essential for the LBRC membrane to be targeted around migrating leukocytes.



All lanes: Anti-CD31 antibody at 1:1,000 dilution

### Immunogen:

A synthetic peptide corresponding to residues on the C-terminus of human CD31 was used as an immunogen.

Predicted MW: 83 kDa

Observed MW: 130 kDa

Lane 1: A431

### Storage Buffer:

PBS 59%, Sodium azide 0.01%, Glycerol 40%, BSA 0.05%.

Lysates at 10 µg per lane

2nd Ab:

GAR HRP(H+L) 1:5,000

Exposure: 60s

### Storage conditions:

-20°C.

### Storage instructions:

Shipped on blue ice. Upon delivery, aliquot, and store at -20°C. Avoid freeze / thaw cycles.

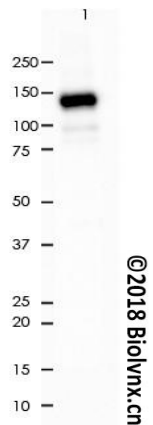
### Recommended Dilutions:

WB: 1:1,000 - 1:2,000

IHC-P: 1:1,600 -1:3,200

FC: 1:200 - 1:1,000

IP: 1:50



All lanes: Anti-CD31 antibody at 1:1,000 dilution

### Background References:

1. Wang X et al. Nat Commun 9:551 (2018).

2. Liang H et al. Oncogene N/A:N/A (2018).

Predicted MW: 83 kDa

Observed MW: 130 kDa

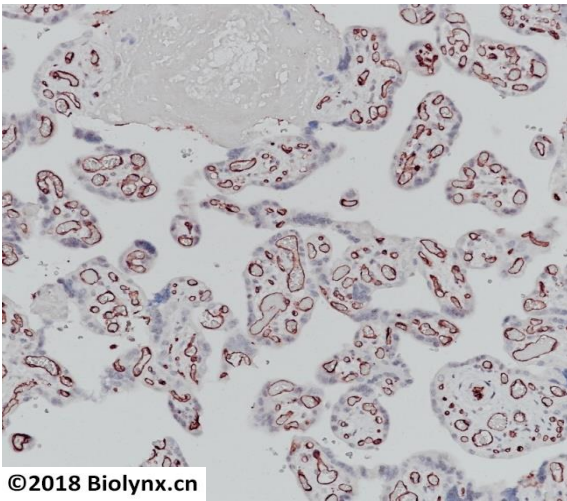
Lane 1: THP-1

Lysates at 10 µg per lane

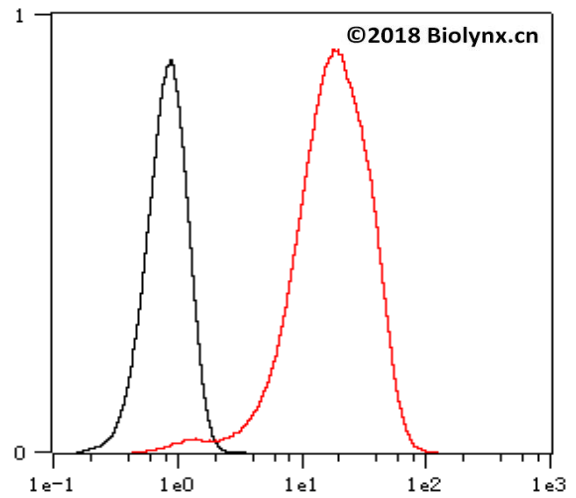
2nd Ab:

GAR HRP(H+L) 1:5,000

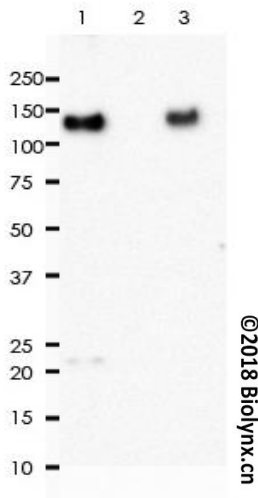
Exposure: 20s



Immunohistochemistry (Formalin/PFA-fixed paraffin-embedded sections) analysis of human placenta tissue labelling CD31 with RR705 at 1:3,200. Heat mediated antigen retrieval was performed using Tris/EDTA buffer pH 9.0.



Overlay histogram showing Jurkat cells stained with RR705 (Red). The cells were fixed with 4% paraformaldehyde for 10 min. The cells were then incubated in the antibody (RR705, 1:1,000 dilution) in 1x PBS/1% BSA for 30 min at room temperature. The secondary antibody used was a Goat Anti-Rabbit Alexa Fluor® 488 (IgG H+L) at 1:2,000 dilution for 20 min at room temperature. Unlabelled sample (Black) was used as a control.



CD31 was immunoprecipitated from 0.4mg of THP-1 whole cell lysate with RR705 at 1:50 dilution.

2nd Ab:  
 GAR HRP for IP 1:500

Lane 1: RR705 IP in THP-1 whole cell lysate  
 Lane 2: PBS instead of RR705 in THP-1 whole cell lysate  
 Lane 3: THP-1 whole cell lysate, 10 µg (input)

Exposure: 120s

Product QC'd by:



For research use only. Not for use in diagnostic or therapeutic applications.