

CD10
Recombinant Rabbit Monoclonal Antibody
Product Datasheet

Catalog# BX00079
Clone# RR683

Predicted Molecular Wt: 86kDa
Species Cross-reactivity: Human Rat
Species cross-reactivity determined by WB
Applications: WB IHC-P FC

Purity: ProA affinity purified IgG
Form: Liquid
Swissprot ID: P08473

Background:

Thermolysin-like specificity, but is almost confined on acting on polypeptides of up to 30 amino acids (PubMed:15283675, PubMed:8168535). Biologically important in the destruction of opioid peptides such as Met- and Leu-enkephalins by cleavage of a Gly-Phe bond (PubMed:17101991). Able to cleave angiotensin-1, angiotensin-2 and angiotensin 1-9 (PubMed:15283675). Involved in the degradation of atrial natriuretic factor (ANF) (PubMed:2531377, PubMed:2972276). Displays UV-inducible elastase activity toward skin preelastic and elastic fibers (PubMed:20876573).

Immunogen:

A recombinant protein corresponding to CD10 residues within aa1-500 was used as an immunogen.

Storage Buffer:

PBS 59%, Sodium azide 0.01%, Glycerol 40%, BSA 0.05%.

Storage conditions:

-20°C.

Storage instructions:

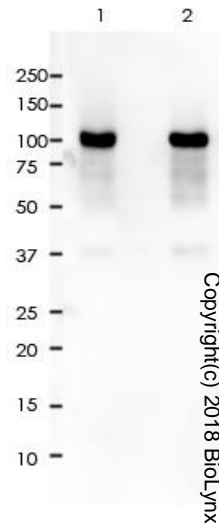
Shipped on blue ice. Upon delivery, aliquot, and store at -20°C. Avoid freeze / thaw cycles.

Recommended Dilutions:

WB: 1:2,000 - 1:5,000
 IHC-P: 1:3,200 - 1:6,400
 FC: 1:800 - 1:2,000

Background References:

- Ahmed Nel-M et al. Stem Cells Int 2016:8102478 (2016).
- Kim Y et al. Mol Cell Proteomics 11:1870-84 (2012).



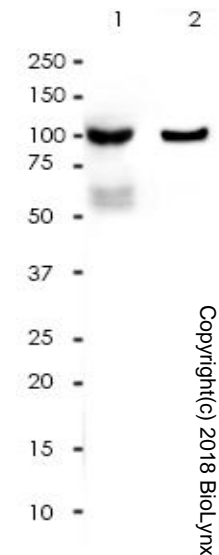
All lanes: Anti-CD10 antibody at 1:2,000 dilution

Predicted MW: 86 kDa
 Observed MW: 100 kDa

Lane 1: Raji
 Lane 2: Ramos

Lysate at 10 µg per lane
 2nd Ab:
 GAR HRP(H+L) 1:5,000

Exposure: 40s



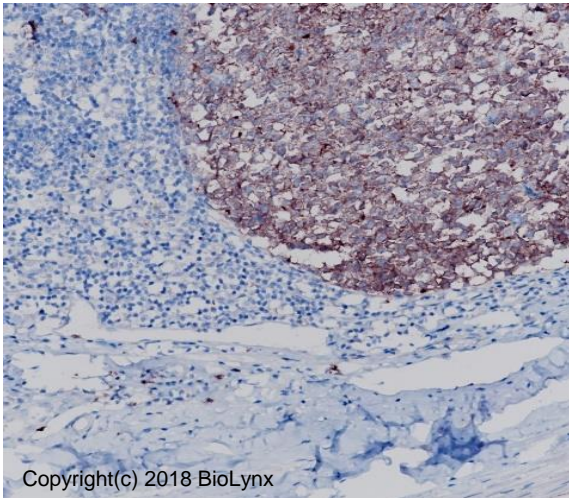
All lanes: Anti-CD10 antibody at 1:2,000 dilution

Predicted MW: 86 kDa
 Observed MW: 100 kDa

Lane 1: LnCap
 Lane 2: Rat Kidney

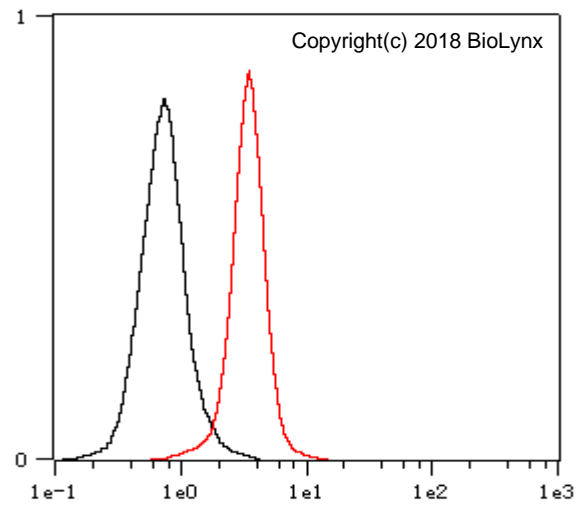
Lysate at 10 µg per lane
 2nd Ab:
 GAR HRP(H+L) 1:5,000

Exposure: 60s



Copyright(c) 2018 BioLynx

Immunohistochemistry (Formalin/PFA-fixed paraffin-embedded sections) analysis of appendix tissue labelling CD10 with RR683 at 1:6,400. Heat mediated antigen retrieval was performed using Tris/EDTA buffer pH 9.0.



Overlay histogram showing Raji cells stained with RR683 (Red). The cells were fixed with 4% paraformaldehyde (10 min) and then permeabilized with 0.1% TritonX-100 for 15 min. The cells were then incubated in the antibody (RR683, 1:2,000 dilution) in 1x PBS/1% BSA for 30 min at room temperature. The secondary antibody used was a Goat Anti-Rabbit Alexa Fluor® 488 (IgG H+L) at 1:2,000 dilution for 20 min at room temperature. Unlabelled sample (Black) was used as a control.

Product QC'd by:



For research use only. Not for use in diagnostic or therapeutic applications.