

## CD23 Recombinant Rabbit Monoclonal Antibody Product Datasheet

Catalog# BX00074

Clone# RR678

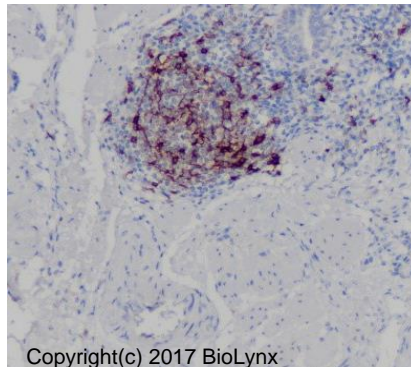
**Predicted Molecular Wt:** 36kDa  
**Species Cross-reactivity:** Human

**Purity:** ProA affinity purified IgG  
**Form:** Liquid  
**Swissprot ID:** P06734

**Applications:** IHC-P

### Background:

Low-affinity receptor for immunoglobulin E (IgE) and CR2/CD21. Has essential roles in the regulation of IgE production and in the differentiation of B-cells (it is a B-cell-specific antigen).



Immunohistochemistry (Formalin/PFA-fixed paraffin-embedded sections) analysis of human cervix tissue labelling CD23 with RR678 at 1:200. Heat mediated antigen retrieval was performed using Tris/EDTA buffer pH 9.0.

### Immunogen:

A synthetic peptide corresponding to C-term of CD23 was used as an immunogen.

### Storage Buffer:

PBS 59%, Sodium azide 0.01%, Glycerol 40%, BSA 0.05%.

### Storage conditions:

-20°C.

### Storage instructions:

Shipped on blue ice. Upon delivery, aliquot, and store at -20°C. Avoid freeze / thaw cycles.

### Recommended Dilutions:

IHC-P: 1:100 - 1:200

### Background References:

1. Chen J et al. Sci Rep 6:30451 (2016).
2. Chen L et al. EBioMedicine 13:237-247 (2016).

Product QC'd by:



For research use only. Not for use in diagnostic or therapeutic applications.