

## Caspase-9 (pro+p35) Recombinant Rabbit Monoclonal Antibody Product Datasheet

Catalog# BX00102

Clone# RR706

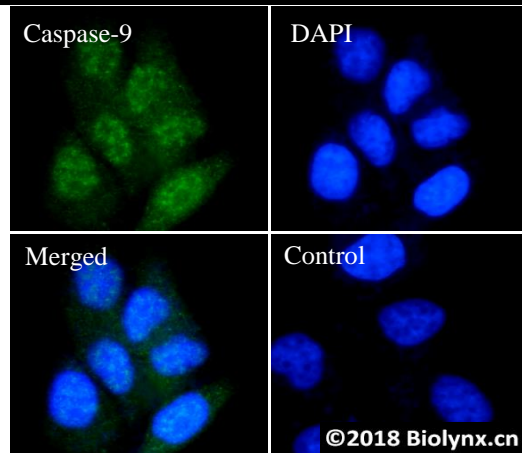
**Predicted Molecular Wt:** 46kDa  
**Species Cross-reactivity:** Human

**Purity:** ProA affinity purified IgG  
**Form:** Liquid  
**Swissprot ID:** P55211

**Applications:** IF/ICC FC

### Background:

Involved in the activation cascade of caspases responsible for apoptosis execution. Binding of caspase-9 to Apaf-1 leads to activation of the protease which then cleaves and activates caspase-3. Promotes DNA damage-induced apoptosis in a ABL1/c-Abl-dependent manner. Proteolytically cleaves poly(ADP-ribose) polymerase (PARP). Isoform 2 lacks activity is an dominant-negative inhibitor of caspase-9.



### Immunogen:

A synthetic peptide corresponding to residues aa216-315 of human Caspase-9 was used as an immunogen.

### Storage Buffer:

PBS 59%, Sodium azide 0.01%, Glycerol 40%, BSA 0.05%.

### Storage conditions:

-20°C.

### Storage instructions:

Shipped on blue ice. Upon delivery, aliquot, and store at -20°C. Avoid freeze / thaw cycles.

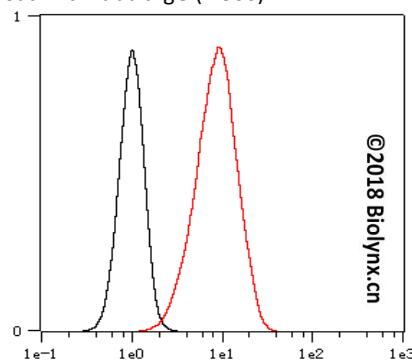
### Recommended Dilutions:

IF/ICC: 1:200 - 1:800  
 FC: 1:2,000 - 1:10,000

### Background References:

1. Qiao H et al. Mol Med Rep 17:3722-3734 (2018).
2. Liu X et al. J Biomed Sci 25:18 (2018).

RR706 staining Caspase-9 (pro+p35) in Hela cells by IF/ICC (immunofluorescence/immunocytochemistry). Cells were fixed with paraformaldehyde, permeabilized with 0.1% Triton X-100 and blocked with 10% goat serum for half an hour at room temperature. Samples were incubated with primary antibody (1:800) at 4°C. An Alexa Fluor® 488-conjugated Goat Anti-Rabbit IgG polyclonal was used as the secondary antibody (1:500). DAPI (blue) was used as the nuclear counter stain. Control: PBS and secondary antibody, An Alexa Fluor® 488-conjugated Goat Anti-Rabbit IgG (1:500).



Overlay histogram showing HeLa cells stained with RR706 (Red). The cells were fixed with 4% paraformaldehyde (10 min) and then permeabilized with 0.1% TritonX-100 for 15 min. The cells were then incubated in the antibody (RR706, 1:10,000 dilution) in 1x PBS/1% BSA for 30 min at room temperature. The secondary antibody used was a Goat Anti-Rabbit Alexa Fluor® 488 (IgG H+L) at 1:2,000 dilution for 20 min at room temperature. Unlabelled sample (Black) was used as a control.

Product QC'd by:



For research use only. Not for use in diagnostic or therapeutic applications.