

## Desmin Recombinant Rabbit Monoclonal Antibody Product Datasheet

Catalog# BX00020

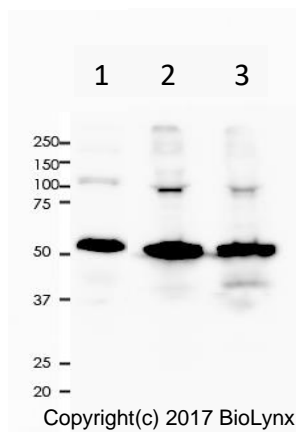
Clone# RR625

**Predicted Molecular Wt:** 54kDa  
**Species Cross-reactivity:** Human Mouse Rat  
*Species cross-reactivity determined by WB*  
**Applications:** WB IHC-P

**Purity:** ProA affinity purified IgG  
**Form:** Liquid  
**Swissprot ID:** P17661

### Background:

Desmin are class-III intermediate filaments found in muscle cells. In adult striated muscle they form a fibrous network connecting myofibrils to each other and to the plasma membrane from the periphery of the Z-line structures (PubMed:24200904, PubMed:25394388, PubMed:26724190). May act as a sarcomeric microtubule-anchoring protein: specifically associates with detyrosinated tubulin- $\alpha$  chains, leading to buckled microtubules and mechanical resistance to contraction.



All lanes : Anti-Desmin antibody at 1:5,000 dilution

Predicted MW: 54 kDa  
Observed MW: 54 kDa

Lane 1 : Rat Heart  
Lane 2 : Human Heart  
Lane 3 : Mouse Heart

Lysates/proteins at 10  $\mu$ g per lane.

Lysate at 10  $\mu$ g per lane  
2nd Ab:  
G&R HRP(H+L) 1:10,000  
Exposure: 100s

### Immunogen:

Synthetic peptide corresponding to Desmin residues within aa370-C terminal of Desmin was used as an immunogen.

### Storage Buffer:

PBS 59%, Sodium azide 0.01%, Glycerol 40%, BSA 0.05%.

### Storage conditions:

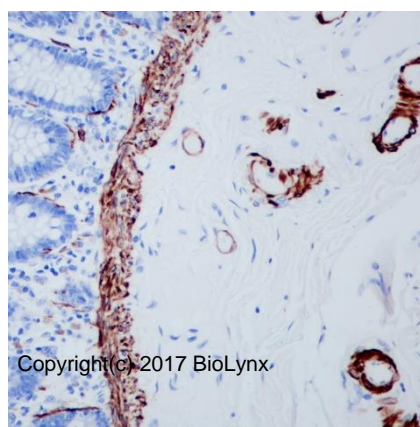
-20°C.

### Storage instructions:

Shipped on blue ice. Upon delivery, aliquot, and store at -20°C. Avoid freeze / thaw cycles.

### Recommended Dilutions:

WB: 1:5,000 - 1:10,000  
IHC-P: 1:4,000 - 1:8,000



Immunohistochemistry (Formalin/PFA-fixed paraffin-embedded sections) analysis of human colon tissue labelling Desmin with RR625 at 1:8,000. Heat mediated antigen retrieval was performed using Tris/EDTA buffer pH9.0.

### Background References:

1. Circ Heart Fail 8:149-55 (2015).
2. Paulin, D. et al. (2004) J Pathol 204, 418-27.

Product QC'd by:



For research use only. Not for use in diagnostic or therapeutic applications.