

## DOG-1 Recombinant Rabbit Monoclonal Antibody Product Datasheet

Catalog# BX00046

Clone# RR650

**Predicted Molecular Wt:** 114kDa

**Species Cross-reactivity:** Human

**Purity:** ProA affinity purified IgG

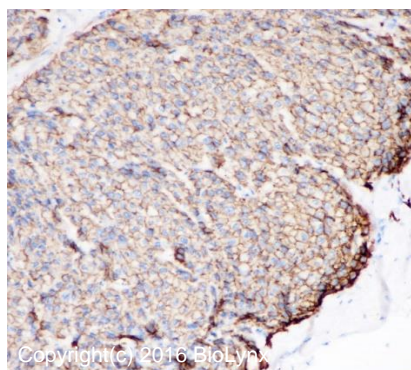
**Form:** Liquid

**Swissprot ID:** Q5XXA6

**Applications:** IHC-P

### Background:

Calcium-activated chloride channel (CaCC) which plays a role in transepithelial anion transport and smooth muscle contraction. Required for the normal functioning of the interstitial cells of Cajal (ICCs) which generate electrical pacemaker activity in gastrointestinal smooth muscles. Acts as a major contributor to basal and stimulated chloride conductance in airway epithelial cells and plays an important role in tracheal cartilage development.



Immunohistochemistry (Formalin/PFA-fixed paraffin-embedded sections) analysis of human GIST tissue labelling DOG-1 with RR650 at 1:200. Heat mediated antigen retrieval was performed using Tris/EDTA buffer pH 9.0.

### Immunogen:

A synthetic peptide corresponding to residues on the C-terminus of human DOG-1 was used as an immunogen.

### Storage Buffer:

PBS 59%, Sodium azide 0.01%, Glycerol 40%, BSA 0.05%.

### Storage conditions:

-20°C.

### Storage instructions:

Shipped on blue ice. Upon delivery, aliquot, and store at -20°C. Avoid freeze / thaw cycles.

### Recommended Dilutions:

IHC-P: 1:100 - 1:200

### Background References:

1. Jung SH, et.al, Gut Liver. 2011 Jun;5(2):171-80.
2. Bergmann F, et.al, Hum Pathol. 2011 Jun;42(6):817-23.

Product QC'd by:



For research use only. Not for use in diagnostic or therapeutic applications.