

## CD21 Recombinant Rabbit Monoclonal Antibody Product Datasheet

Catalog# BX00027

Clone# RR630

**Predicted Molecular Wt:** 113kDa

**Species Cross-reactivity:** Human

**Purity:** ProA affinity purified IgG

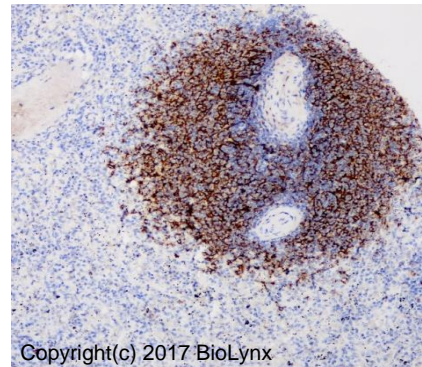
**Form:** Liquid

**Swissprot ID:** P20023

**Applications:** IHC-P FC

### Background:

Receptor for complement C3Dd, for the Epstein-Barr virus on human B-cells and T-cells and for HNRPU. Participates in B lymphocytes activation. (Microbial infection) Acts as a receptor for Epstein-Barr virus.



Immunohistochemistry (Formalin/PFA-fixed paraffin-embedded sections) analysis of human spleen tissue labelling CD21 with RR630 at 1:200. Heat mediated antigen retrieval was performed using Tris/EDTA buffer pH 9.0.

### Immunogen:

A synthetic peptide corresponding to residues on the C-terminus of human CD21 was used as an immunogen

### Storage Buffer:

PBS 59%, Sodium azide 0.01%, Glycerol 40%, BSA 0.05%.

### Storage conditions:

-20°C.

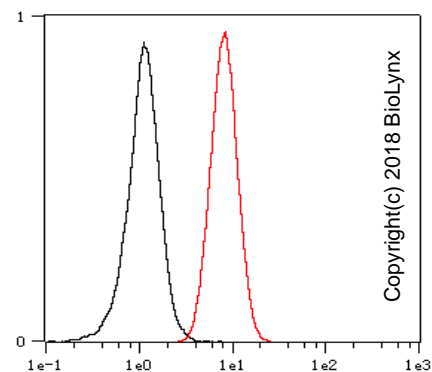
### Storage instructions:

Shipped on blue ice. Upon delivery, aliquot, and store at -20°C. Avoid freeze / thaw cycles.

### Recommended Dilutions:

IHC-P: 1:200 - 1:400

FC: 1:10



Overlay histogram showing Ramos cells stained with RR630 (Red). The cells were fixed with 4% paraformaldehyde (10 min) and then permeabilized with 0.1% TritonX-100 for 15 min. The cells were then incubated in the antibody (RR630, 1:10 dilution) in 1x PBS/1% BSA for 30 min at room temperature. The secondary antibody used was a Goat Anti-Rabbit Alexa Fluor® 488 (IgG H+L) at 1:2,000 dilution for 20 min at room temperature. Unlabelled sample (Black) was used as a control.

### Background References:

- Alunno A et al. J Cell Mol Med 19:1689-96 (2015).
- Herishanu Y et al. J Immunol 190:784-93 (2013).

Product QC'd by:



For research use only. Not for use in diagnostic or therapeutic applications.