

Myelin Basic Protein Recombinant Rabbit Monoclonal Antibody Product Datasheet

Catalog# BX50082

Clone# BP6087

Predicted Molecular Wt: 14~22kDa

Species Cross-reactivity: Human

Applications: IHC-P

Purity: ProA affinity purified IgG

Form: Liquid

Swissprot ID: P02686

Background:

Myelin basic protein (MBP) is the second most abundant protein in central nervous system (CNS) myelin: it comprises 30% of the total protein and about 10% of the dry weight of myelin. It is the only structural protein found so far to be essential for formation of CNS myelin, and has been called the 'executive molecule of myelin'.

MBP can interact with a number of polyanionic proteins including actin, tubulin, calmodulin, and clathrin, and negatively charged lipids, and acquires structure on binding to them. It may act as a membrane actin-binding protein, which might allow it to participate in transmission of extracellular signals to the cytoskeleton in oligodendrocytes and tight junctions in myelin.

MBP may be applicable as a marker for oligodendrogliomas.

Subcellular location:

Cytoplasm and Membrane

Recommended method:

Heat induced epitope retrieval with Tris-EDTA buffer (pH 9.0), primary antibody incubate at RT (18°C-25°C) for 30 minutes.

Immunogen:

Synthetic peptide corresponding to residues within aa150-250 of Myelin Basic Protein was used as an immunogen.

Storage Buffer:

PBS 59%, Sodium azide 0.01%, Glycerol 40%, BSA 0.05%.

Storage conditions:

-20°C

Storage instructions:

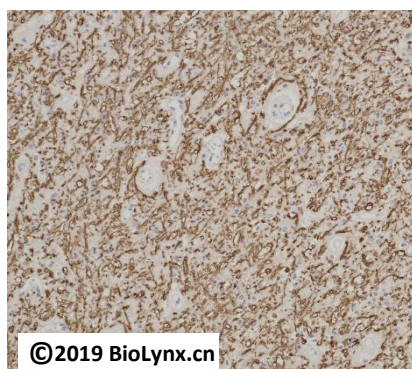
Shipped on blue ice. Upon delivery, aliquot, and store at -20°C. Avoid freeze / thaw cycles.

Recommended Dilutions:

IHC-P: 1:100-1:200

Background References:

1. Boggs J M . Cellular and Molecular Life Sciences (CMLS), 2006, 63(17):1945-1961.



Immunohistochemistry (Formalin/PFA-fixed paraffin-embedded sections) analysis of Glioma labelling MBP with BP6087. Heat mediated antigen retrieval was performed using Tris/EDTA buffer pH 9.0

Product QC'd by:



For research use only. Not for use in diagnostic or therapeutic applications.