

Cytokeratin 17 Recombinant Rabbit Monoclonal Antibody Product Datasheet

Catalog# BX50103

Clone# BP6108

Predicted Molecular Wt: 48kDa
Species Cross-reactivity: Human
Applications: IHC-P

Purity: ProA affinity purified IgG
Form: Liquid
Swissprot ID: Q04695

Background:

Cytokeratin 17 (CK17) is 48 kD intermediate filament found in simple epithelia and is a marker for cervical reserve (stem) cells. CK17 can be useful in the identification of uterine cervical squamous lesions including atypical immature metaplasia, cervical intraepithelial neoplasia, and cervical squamous carcinoma. CK17 also assists in the differentiation of oral squamous cell carcinoma. CK17 staining occurs in human epithelial appendages such as hair follicles.

Studies indicate CK17 maybe an excellent marker for the identification of squamous cell carcinomas in various tissues including the cervix, lung and oral cavity. CK17 may also be helpful in distinguishing myoepithelial cells from luminal epithelium of various glands such as mammary, sweat and salivary. Positive expression of CK17 in breast cancer has been associated with a worse prognosis, high tumor grade and positive axillary lymph nodes. Expressed in the outer root sheath and medulla region of hair follicle specifically from eyebrow and beard, digital pulp, nail matrix and nail bed epithelium, mucosal stratified squamous epithelia and in basal cells of oral epithelium, palmoplantar epidermis and sweat and mammary glands. Also expressed in myoepithelium of prostate, basal layer of urinary bladder, cambial cells of sebaceous gland and in exocervix (at protein level).

Subcellular location:

Cytoplasmic

Recommended method:

Heat induced epitope retrieval with Tris-EDTA buffer (pH 9.0), primary antibody incubate at RT (18°C-25°C) for 30 minutes.

Immunogen:

Synthetic peptide corresponding to residues within aa400-500 of Human Cytokeratin 17 was used as an immunogen.

Storage Buffer:

PBS 59%, Sodium azide 0.01%, Glycerol 40%, BSA 0.05%.

Storage conditions:

-20°C

Storage instructions:

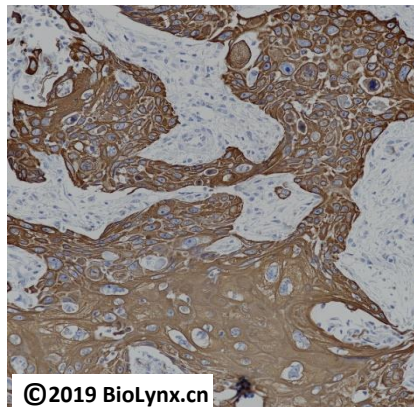
Shipped on blue ice. Upon delivery, aliquot, and store at -20°C. Avoid freeze / thaw cycles.

Recommended Dilutions:


IHC-P: 1:100-1:200

Background References:

1. van de Rijn M, et al. Am J Pathol. 2002 Dec; 161(6):1991-6.
2. Lerma E, Barnadas A, Prat J. Appl Immunohistochem Mol Morphol. 2009 Dec; 17(6):483-94.



Immunohistochemistry (Formalin/PFA-fixed paraffin-embedded sections analysis of esophageal carcinoma tissue labelling Cytokeratin 17 with BP6108. Heat mediated antigen retrieval was performed using Tris/EDTA buffer

Product QC'd by: 

For research use only. Not for use in diagnostic or therapeutic applications.